



cendrex

Access doors | Floor hatches | Roof hatches

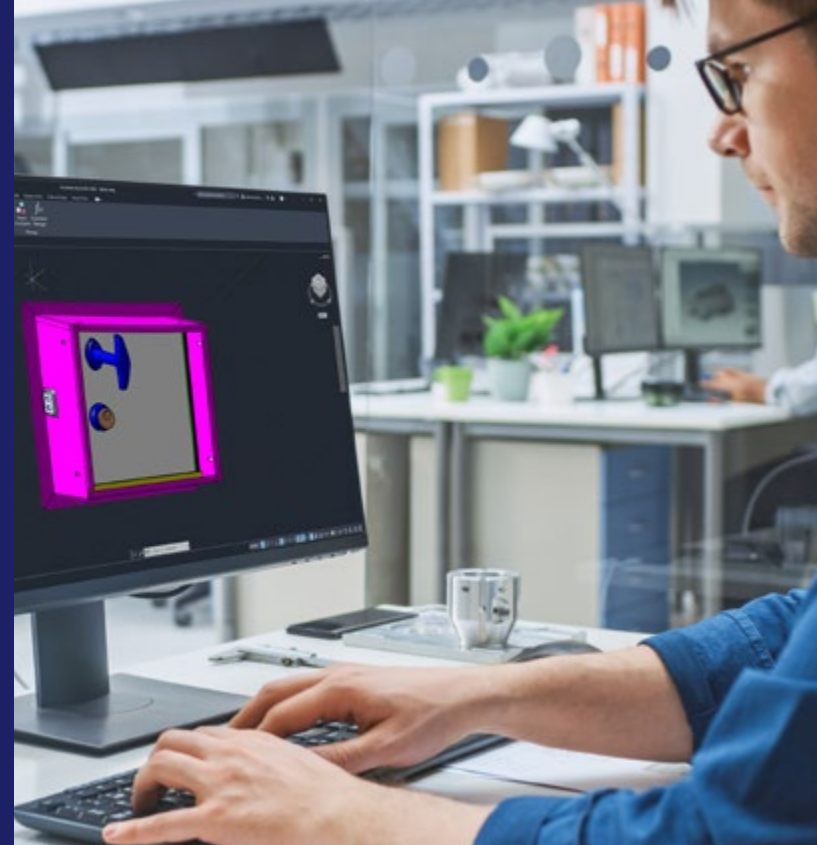


Custom doors

Are you looking for a fully-customized access door? **Let us build your door from scratch in just 10 days.**

OUR R&D DEPARTMENT

- ✔ Let our creative, detail-oriented team of experts guide you through every step of the access door design that best meets your needs.
- ✔ Technical data sheets and prototypes are available upon demand.
- ✔ Benefit from our quick response and the shortest lead time in the industry.



We design what you imagine

EXAMPLES OF CUSTOM DOORS



A SIMPLIFIED PROCESS

- 1- Contact us at info@cendrex.com
- 2- Share your needs with our experts, and they will design your custom door
- 3- Approve our plans and prototype (if applicable) and finalize your order
- 4- Get your door manufactured in just 10 days



All the Models, dimensions and options you want!

ANY SIZE

We customize standard doors to:

- ✔ Fit tight spaces and existing openings
- ✔ Work with imperfect walls and ceilings
- ✔ Cover existing openings
- ✔ Control access to your equipment

AS EASY AS 1-2-3

- 1- Choose the standard door you want to customize
- 2- Decide what size you need and/or choose your options
- 3- Submit your order to orders@cendrex.com and we'll build it in 5 days

Design your access door!

Cendrex is THE reference in the manufacturing of customized access doors in North America. Our access doors always meet our clients' needs and specifications.

- ✔ Hundreds of access panels to personalize!
- ✔ All sizes can be manufactured.
- ✔ Choose from 30 other options!

YOUR PREMIUM ACCESS DOOR MADE IN 5 DAYS!

ENDLESS OPTIONS

Personalize our standard doors according to your preferred:

- ✔ Materials
- ✔ Locking mechanisms
- ✔ Handles
- ✔ Gaskets

Other options are available



The Cendrex advantage

Cendrex's commitment to reliability is reflected in rigorous procedures, a daily drive for improvement, and innovative products. With a robust distribution network across North America and a guarantee of fast and efficient delivery, the Cendrex team takes pride in offering unmatched reliability in the industry.

EXCEPTIONAL RELIABILITY

On-time delivery with an efficiency rate of over 99%.

ODD-SIZED AND OPTIONS MADE IN 5 DAYS

Our standard models can be customized with different dimensions and options and made in 5 days.

CUSTOM DOORS IN 10 DAYS

Your vision, our creation. We offer a quick turnaround, with completely customized doors made in 10 days.

FAST AND EASY INSTALLATION

The Flexisnap^{MD} adjustable magnetic access panel reduces installation time by up to 90%.

EXCEPTIONAL PRODUCTS

Opt for access panels from the Elegance Collection series, the most aesthetically pleasing panels on the market.

GREAT PRODUCT AVAILABILITY

With regional warehouses in California, Colorado, Florida, Illinois, Massachusetts, New Jersey, Pennsylvania, Texas, Utah, Washington and Canada we're able to deliver on time, every time!

LEED V4 CREDITS

Our high-quality access doors contribute to LEED v4 credits. All documentation is available at cendrex.com.



ELEGANCE COLLECTION

EDG-GYP

Flush Removable Access Door with Drywall Bead Flange



SPECIFICATIONS

To provide a more elegant yet economical solution, this access door is equipped with removable hinges and concealed push-to-close latches.

Installation	Walls and ceilings
Material	16-gauge cold-rolled steel door and frame
Hinge	Concealed spring pin type, located on the second dimension (height)
Locking mechanism	Concealed push latches
Finish	High-quality white powder coat primer
Packaging	Individually wrapped, 1 door per box

TABLE OF STANDARD SIZES

Door size WXH inches (mm)	Nb. of latches	Shipping weight	
		LBS	KG
EDG-GYP 06X06 (152x152)	1	2.3	1.0
EDG-GYP 08X08 (203x203)	1	3.2	1.5
EDG-GYP 08X12 (203x305)	1	4.5	2.0
EDG-GYP 10X10 (254x254)	1	4.3	2.0
EDG-GYP 12X12 (305x305)	2	5.7	2.6
EDG-GYP 12X16 (305x406)	2	7.0	3.2
EDG-GYP 12X18 (305x457)	2	7.9	3.6
EDG-GYP 12X24 (305x610)	2	9.9	4.5
EDG-GYP 14X14 (356x356)	2	7.0	3.2
EDG-GYP 16X16 (406x406)	2	8.5	3.9
EDG-GYP 18X18 (457x457)	2	10.3	4.7
EDG-GYP 18X24 (457x610)	2	12.9	5.9
EDG-GYP 20X20 (508x508)	2	12.1	5.5
EDG-GYP 22X22 (559x559)	2	14.3	6.7
EDG-GYP 22X30 (559x762)	4	18.2	8.4
EDG-GYP 22X36 (559x914)	4	21.2	9.6
EDG-GYP 24X24 (610x610)	2	16.2	7.5

Rough opening = Door size + 1/4" or + 6 mm

OTHER SIZES AND OPTIONS MADE IN 5 DAYS

STANDARD FEATURES

CR Cold-rolled steel door and frame **32** Push latch Concealed spring pin type

POPULAR OPTIONS/ CUSTOMIZE YOUR OWN ACCESS DOOR

See p.26 for detailed descriptions.

Material	GS Galvanneal steel	SS* Stainless steel
Other	140 Louvered doors	160 Holding cable
	180 Double-leaf	240 Masonry anchors

*Hardware made of zinc-plated steel.



EDG-GYP-180
Flush Removable Double-leaf Access Door with Drywall Bead Flange

Installed



Concealed hinges and push latch



CTR-MAG

CONTOUR-Flush Universal Access Door with Magnetic Closing



SPECIFICATIONS

Designed for a modern look, this access door is equipped with a hidden magnetic closing mechanism and concealed double-arm hinges.

Installation	Walls and ceilings
Material	16-gauge cold-rolled steel door and frame
Hinge	Concealed, exclusive pantograph double-arm design hinge, located on the second dimension (height)
Locking mechanism	Concealed magnets
Finish	High-quality white powder coat primer
Packaging	Individually wrapped, 1 door per box

TABLE OF STANDARD SIZES

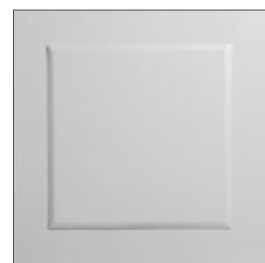
Door size WXH inches (mm)	Nb. of magnets	Shipping weight	
		LBS	KG
CTR-MAG 08.25X08.25 (210x210)	1	3.8	1.7
CTR-MAG 08.25X12 (210x305)	1	5.0	2.3
CTR-MAG 10X10 (254x254)	1	4.8	2.2
CTR-MAG 12X12 (305x305)	1	6.1	2.8
CTR-MAG 12X18 (305x457)	1	8.4	3.8
CTR-MAG 14X14 (356x356)	1	7.5	3.4
CTR-MAG 16X16 (406x406)	1	9.0	4.1
CTR-MAG 18X18 (457x457)	3	10.9	4.9
CTR-MAG 18X24 (457x610)	3	13.5	6.1
CTR-MAG 20X20 (508x508)	3	12.8	5.8
CTR-MAG 22X22 (559x559)	3	15.0	6.8
CTR-MAG 22X30 (559x762)	4	19.0	8.6
CTR-MAG 22X36 (559x914)	5	22.2	10.1
CTR-MAG 24X24 (610x610)	3	16.9	7.7
CTR-MAG 24X30 (610x762)	5	21.2	9.6
CTR-MAG 24X36 (610x914)	5	23.6	10.7

Rough opening = Door size + 1/4" or + 6 mm

OTHER SIZES AND OPTIONS MADE IN 5 DAYS



Magnets



Installed

STANDARD FEATURES

CR Cold-rolled steel door and frame	Concealed magnets	Concealed, exclusive pantograph double arm design hinge
--------------------------------------------	-------------------	---------------------------------------------------------

POPULAR OPTIONS / CUSTOMIZE YOUR OWN ACCESS DOOR

See p.26 for detailed descriptions.

Latch	10 Key-operated cylinder cam latch	15 Mortise cam latch preparation	15C Mortise cam latch preparation with cylinder, keyed differently	15CKA Mortise cam latch preparation with cylinder, keyed alike	30 Slide latch
	35 Screwdriver-operated cam latch	40 Mortise deadbolt lock	40C Mortise deadbolt lock with cylinder	40CKA Mortise deadbolt lock with cylinder, keyed alike	50 Hex head cam latch
	55 Hex head slam latch	80 Ring/tool key operated slam latch	85 Mortise slam latch	85C Mortise slam latch with cylinder	85CKA Mortise slam latch cylinder keyed alike
	90 Pinned hex head cam latch	99* Inside release thumbturn for mortise deadbolt lock			
Handle	20 4" handle-operated cam latch	21 Fixed 4" handle	22 4" handle-operated slam latch	25 4" handle key operated cam latch	26** L handle
Material	GS Galvanneal steel				
Other	60 Gasket	140 Louvered door	160 Holding cable	240 Masonry anchors	

* Available only in combination with option 40, 40C or 40CKA.

** Available only in combination with option 20, 22 or 25.

GFRG

Fiberglass Reinforced Gypsum Access Door



SPECIFICATIONS

Gypsum-based material blends in perfectly with drywall surface once painted. The GFRG is specially designed with rounded corners, square corners or a pop-out round for a smooth finish.

Installation	Ceilings
Material	Lightweight fiberglass-reinforced gypsum
Hinge	No hinge
Locking mechanism	Gravity-operated closing and removable door
Finish	Rounded corners (radius finish). To be primed and painted on site.
Packaging	Individually wrapped, 1 door per box

TABLE OF STANDARD SIZES

Door size WXH inches (mm)	Shipping weight	
	LBS	KG
GFRG-PUR 09X09 (229x229)	6	2.72
GFRG-PUR 12X12 (304x304)	8	3.63
GFRG-PUR 16X16 (406x406)	10	4.54
GFRG-PUR 18X18 (457x457)	11	4.99
GFRG-PUR 24X24 (609x609)	16	7.26

Rough opening = Door size + 6" or + 152 mm

OTHER SIZES AND OPTIONS MADE IN 15 DAYS

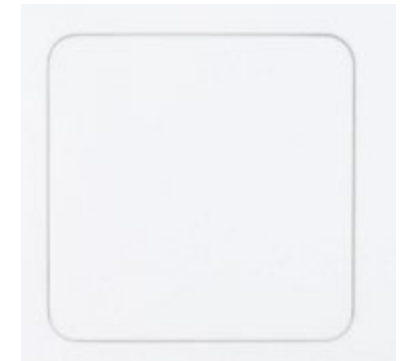
STANDARD FEATURES

Fiberglass-reinforced gypsum	PUR Rounded corners	No hinge
------------------------------	----------------------------	----------

POPULAR OPTIONS / CUSTOMIZE YOUR OWN ACCESS DOOR

See p.26 for detailed descriptions.

Latch	10 Key-operated cylinder cam latch	220 Screwdriver-operated cylinder cam latch
Other	60 Gasket	



Other models and options available in 15 days



GFRG-HIR-00
With european hinge, Rounded corners
For walls and ceilings



GFRG-HIS-00
With european hinge, Square corners
For walls and ceilings



GFRG-PoR-00
With gravity-operated closing. Removable door, pop out round
For ceilings only



GFRG-PUS-00
With gravity-operated closing. Removable door, Square corners
For ceilings only

RAL | Alumi - Recessed Aluminum Access Door with Hidden Flange



SPECIFICATIONS

The Alumi model has a removable door, a drywall insert and an Aluminum frame that blends in perfectly with walls or ceilings. The gasket restricts air and smoke infiltration. The door is also available in recesses of 1/2" or 5/8".

Installation	Walls and ceilings
Material	Extruded mill-finish Aluminum
Hinge	Concealed free-pivot hinge, located on the first dimension (width)
Locking mechanism	Concealed push latch(es)
Finish	Mill Finish Aluminium extrusion with mold though drywall inlay
Packaging	Individually wrapped, 1 door per box
Removable door	Yes (with retaining cables)

STANDARD FEATURES

AL Aluminum **32** Push latch **60** Gasket

POPULAR OPTIONS / CUSTOMIZE YOUR OWN ACCESS DOOR

See p.26 for detailed descriptions.

Latch	10 Key-operated cylinder cam latch	220 Screwdriver-operated cylinder cam latch
Other	180 Double-leaf	

Other models available in 15 days



TILE FINISH

Available with 1/2" or 5/8" drywall insert. We advise you on the right solution for an aesthetic finish. Other options available.

Ask us about the right solution for a pleasing finish.



WITH RETURN AIR GRILL

Available with 1/2" or 5/8" drywall insert. Return air grill options available.



DOUBLE/MULTIPLE LEAF ACCESS DOOR

Available with 1/2" or 5/8" drywall insert. Other options available.

Installed



OTHER SIZES AND OPTIONS MADE IN 15 DAYS

Rough opening = Door size + 3/8" or + 9.5 mm

TABLE OF STANDARD SIZES

Recessed 1/2" WXH inches (mm)	Nb. of latches	Shipping weight	
		LBS	KG
RAL-12 08X08 (203x203)	2	2.3	1
RAL-12 12X12 (304x304)	2	3.5	1.6
RAL-12 16X16 (406x406)	2	4.9	2.2
RAL-12 18X18 (457x457)	2	5.8	2.6
RAL-12 20X20 (508x508)	2	6.7	3
RAL-12 24X24 (609x609)	2	8.8	4
RAL-12 36X36 (914x914)	2	16.9	7.7
RAL-12 24X48 (609x1219)	2	15.5	7
Recessed 5/8" WXH inches (mm)	Nb. of latches	Shipping weight	
		LBS	KG
RAL-58 08X08 (203x203)	2	2.8	1.3
RAL-58 12X12 (304x304)	2	4.4	2
RAL-58 16X16 (406x406)	2	6.5	3
RAL-58 18X18 (457x457)	2	7.8	3.5
RAL-58 20X20 (508x508)	2	9.1	4.1
RAL-58 24X24 (609x609)	2	12.2	5.5
RAL-58 36X36 (914x914)	2	24.2	11
RAL-58 24X48 (609x1219)	2	22.1	10

AHD | Flush Universal Access Door with Exposed Flange



SPECIFICATIONS

Designed for quick and easy installation on non-rated walls and ceilings made of any type of materials.

Installation	Walls and ceilings
Material	16-gauge cold-rolled steel door and frame
Hinge	Hot-rolled and stamped steel pin-hinge, located on the second dimension (height). Continuous piano-type on doors over 24" (height or width).
Locking mechanism	Screwdriver-operated cam latch
Finish	High-quality white powder coat primer
Packaging	Individually wrapped, 1 door per box

TABLE OF STANDARD SIZES

Door size WXH inches (mm)	Nb. of locks	Shipping weight	
		LBS	KG
AHD with Pin Hinge			
AHD 06X06 (152x152)	1	2.1	1.0
AHD 08X08 (203x203)	1	3.0	1.4
AHD 08X12 (203x305)	1	4.1	1.9
AHD 10X10 (254x254)	1	4.1	1.9
AHD 12X12 (305x305)	1	5.3	2.4
AHD 12X16 (305x406)	1	6.6	3.0
AHD 12X18 (305x457)	1	7.5	3.4
AHD 12X24 (305x610)	1	9.4	4.3
AHD 14X14 (356x356)	1	6.6	3.0
AHD 14X20 (356x508)	1	8.9	4.0
AHD 16X16 (406x406)	1	8.1	3.7
AHD 18X18 (457x457)	1	9.9	4.5
AHD 18X24 (457x610)	1	12.4	5.6
AHD 20X20 (508x508)	1	11.7	5.3
AHD 22X22 (559x559)	1	13.8	6.3
AHD 24X24 (610x610)	1	15.8	7.2
AHD-110 with Piano Hinge			
AHD 22X30-110 (559x762)	2	17.7	8.0
AHD 22X36-110 (559x914)	2	20.8	9.4
AHD 24X30-110 (610x762)	2	19.9	9.0
AHD 24X36-110 (610x914)	2	22.3	10.1
AHD 24X48-110 (610x1219)	2	28.9	13.1
AHD 30X30-110 (762x762)	4	23.5	10.7
AHD 36X36-110 (914x914)	4	31.7	14.4
AHD-GYP with Pin Hinge			
AHD-GYP 08X08 (203x203)	1	3.1	1.4
AHD-GYP 10X10 (254x254)	1	4.2	1.9
AHD-GYP 12X12 (305x305)	1	5.5	2.5
AHD-GYP 14X14 (356x356)	1	6.8	3.1
AHD-GYP 16X16 (406x406)	1	8.3	3.8
AHD-GYP 18X18 (457x457)	1	10.2	4.6
AHD-GYP 18X24 (457x610)	1	12.3	5.8
AHD-GYP 22X22 (559x559)	1	14.1	6.0
AHD-GYP 24X24 (610x610)	1	16.1	7.3
AHD-PLY with Pin Hinge			
AHD-PLY 08X08 (203x203)	1	3.3	1.5
AHD-PLY 10X10 (254x254)	1	4.4	2.0
AHD-PLY 12X12 (305x305)	1	5.7	2.6
AHD-PLY 14X14 (356x356)	1	7.1	3.2
AHD-PLY 16X16 (406x406)	1	8.6	3.9
AHD-PLY 18X18 (457x457)	1	10.4	4.7
AHD-PLY 18X24 (457x610)	1	13.1	5.9
AHD-PLY 24X24 (610x610)	1	16.5	7.5

Rough opening = Door size + 1/4" or + 6 mm

OTHER SIZES AND OPTIONS MADE IN 5 DAYS

STANDARD FEATURES

CR Colled-rolled steel door and frame **35** Screwdriver-operated cam latch Pin hinge for doors with height and width ≤ than 24" **110** Continuous piano hinge for doors with height or width ≥ than 24"

POPULAR OPTIONS / CUSTOMIZE YOUR OWN ACCESS DOOR

See p.26 for detailed descriptions.

Latch	10 Key-operated cylinder cam latch	15 Mortise cam latch preparation	15C Mortise cam latch preparation with cylinder, keyed differently	15CKA Mortise cam latch preparation with cylinder, keyed alike	30 Slide latch
	40*** Mortise deadbolt lock	40C*** Mortise deadbolt lock with cylinder	40CKA*** Mortise deadbolt lock with cylinder, keyed alike	50 Hex head cam latch	55 Head hex slam latch
	80 Ring/tool key operated slam latch	85 Mortise slam latch	85C Mortise slam latch with cylinder	85CKA Mortise slam latch cylinder keyed alike	90*** Pinned hex head cam latch
	99* Inside release thumbturn for mortise deadbolt lock				
Handle	20 4" handle-operated cam latch	21 Fixed 4" Handle	22 4" handle-operated slam latch	25 4" handle key operated cam latch	26** L handle
Material	SS Stainless steel		GS Galvanneal steel		
Other	60*** Gasket	110 Continuous piano hinge for doors with height or width ≤ than 24"	140 Louvered door	160 Holding cable	180 Double-leaf
			240 Masonry anchors		

* Available only in combination with option 40, 40C or 40CKA.

** Available only in combination with option 20, 22 or 25.

*** Available only in combination with option 110



AHD-GYP
Flush Universal Access Door with Drywall Bead Flange



AHD-PLY
Flush Universal Access Door with Plaster Bead Flange



AHD-110
Flush Universal Access Door with Exposed Flange and Piano Hinge

CTR

Flush Universal Access Door with Hidden Flange



LEED V4 COMPLIANT

SPECIFICATIONS

Designed for a more aesthetically pleasing finish, the panel has bevelled edges that close over the flange.

Installation	Walls and ceilings
Material	16-gauge cold-rolled steel door and frame
Hinge	Concealed, exclusive pantograph double-arm design hinge, located on the second dimension (height)
Locking mechanism	Screwdriver-operated cam latch in cold-rolled steel
Finish	High-quality white powder coat primer
Packaging	Individually wrapped, 1 door per box

STANDARD FEATURES

- CR** Colled-rolled steel door and frame
- 35** Screwdriver-operated cam latch
- Concealed, exclusive pantograph double arm design hinge

POPULAR OPTIONS / CUSTOMIZE YOUR OWN ACCESS DOOR

See p.26 for detailed descriptions.

Latch	10 Key-operated cylinder cam latch	15 Mortise cam latch preparation	15C Mortise cam latch preparation with cylinder, keyed differently	15CKA Mortise cam latch preparation with cylinder, keyed alike	30 Slide latch
	40 Mortise deadbolt lock	40C Mortise deadbolt lock with cylinder	40CKA Mortise deadbolt lock with cylinder, keyed alike	50 Hex head cam latch	55 Hex head slam latch
	80 Ring/tool key operated slam latch	85 Mortise slam latch	85C Mortise slam latch with cylinder	85CKA Mortise slam latch cylinder keyed alike	90 Pinned hex head cam latch
	99* Inside release thumbturn for mortise deadbolt lock				
Handle	20 4" handle-operated cam latch	21 Fixed 4" handle	22 4" handle-operated slam latch	25 4" handle key operated cam latch	26** L handle
Material	GS Galvanneal steel		SS Stainless steel		
Other	60 Gasket	140 Louvered door	160 Holding cable	240 Masonry anchors	

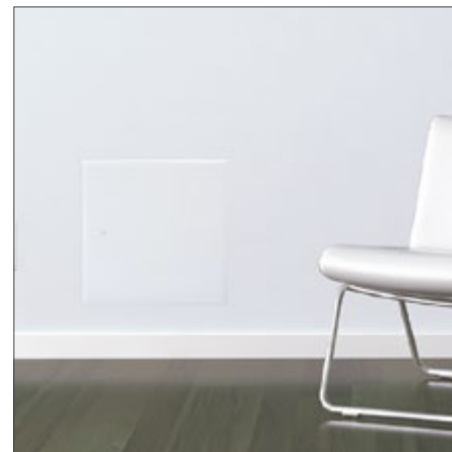
* Available only in combination with option 40, 40C or 40CKA.
 ** Available only in combination with option 20, 22 or 25.

TABLE OF STANDARD SIZES

Door size WXH inches (mm)	Nb. of locks	Shipping weight	
		LBS	KG
CTR 08.25X08.25 (210x210)	1	3.8	1.7
CTR 08.25X12 (210x305)	1	4.9	2.2
CTR 10X10 (254x254)	1	4.8	2.2
CTR 12X12 (305x305)	1	6.1	2.8
CTR 12X18 (305x457)	1	8.3	3.8
CTR 14X14 (356x356)	1	7.4	3.4
CTR 16X16 (406x406)	1	8.9	4.0
CTR 18X18 (457x457)	3	10.9	4.9
CTR 18X24 (457x610)	4	13.6	6.2
CTR 20X20 (508x508)	4	12.8	5.8
CTR 22X22 (559x559)	4	15.0	6.8
CTR 22X30 (559x762)	5	18.9	8.6
CTR 22X36 (559x914)	5	22.1	10.0
CTR 24X24 (610x610)	4	16.9	7.7
CTR 24X30 (610x762)	5	21.1	9.6
CTR 24X36 (610x914)	5	23.6	10.7

Rough opening = Door size + 1/4" or + 6 mm

OTHER SIZES AND OPTIONS MADE IN 5 DAYS



CTR
Hidden Flange Door and Frame

FLEXI SNAP

by cendrex

Flush Universal Access Door with Adjustable Frame and Magnetic Closing



LEED V4 COMPLIANT

SPECIFICATIONS

FlexiSnap® is a magnetic access door with powerful magnets that hold the sturdy metal panel in place. The adjustable frame adjusts to different openings.

Installation	Walls and ceilings
Material	20-gauge cold-rolled steel door and 24-gauge galvanized steel frame
Hinge	No hinge type. Concealed magnetic closure.
Locking mechanism	4 magnets, 1 per polymer corner
Finish	High-quality white powder coat primer
Packaging	Individually wrapped, available in single box or multipack.

STANDARD FEATURES

- CR** Colled-rolled steel door
- Magnets
- No hinge

TABLE OF STANDARD SIZES

Door size WXH inches (mm)	Shipping weight	
	LBS	KG
4 per box		
FLE 6.5X8-W From 6.5x6.5 to 8x8 (from 165x165 to 203x203)	7	3.8
FLE 10.5X12-W From 10.5x10.5 to 12x12 (from 267x267 to 305x305)	13	5.9
FLE 14X15.5-W 14x14 to 15.5x15.5 (356x356 to 394x394)	17.48	7.93
1 per box	LBS	KG
FLE 6.5X8-PRO From 6.5x6.5 to 8x8 (from 165x165 to 203x203)	1.15	0.52
FLE 10.5X12-PRO From 10.5x10.5 to 12x12 (from 267x267 to 305x305)	3.40	1.54
FLE 14X15.5-PRO 14x14 to 15.5x15.5 (356x356 to 394x394)	4.16	1.89

Rough opening = 6.5"X6.5" to 15.5"X15.5"

AVAILABLE IN 3 DIFFERENT SIZES!



Installed



Adjustable frame

Always Install the security cables



FLE-W Multipack



FLE-PRO Single pack



QUICK & EASY INSTALLATION VIDEO

Easy 2 minutes installation!

RPL

Flush Universal Removable Plastic Access Door with Exposed Flange



SPECIFICATIONS

The removable plastic access panel, with UV stabilizers, is ideal for flush or surface mounting.

Installation	Walls and ceilings
Material	High-impact ABS plastic with UV stabilizers
Hinge	No hinge type
Locking mechanism	Snap friction catch and removable door
Finish	High-quality white powder coat primer
Packaging	Individually wrapped, 1 door per box
Instruction	Apply construction adhesive to the back side of the frame

TABLE OF STANDARD SIZES

Door size WXH inches (mm)	Shipping weight	
	LBS	KG
RPL 06X09 (152x229) Rough opening: 6 3/8" X 9 3/8"	0.5	0.22
RPL 08X08 (203x203) Rough opening: 3 3/8" X 8 3/8"	0.5	0.22
RPL 14X14 (356x356) Rough opening: 14" X 14"	1.95	0.88
RPL 14X29 (356x737) Rough opening: 14" X 29 1/2"	4.55	2.06

Rough opening = Door size + 1/4" or + 6 mm

STANDARD FEATURES

Plastic type	Removable door	No hinge
--------------	----------------	----------

RMD

Flush Universal Removable Access Door with Hidden Flange



SPECIFICATIONS

The access panel has bevelled edges, that close over the flange. The two screwdriver cam latches keep the panel closed. The door is ideal for confined spaces where access is limited or where a hinged door cannot be used because of an obstruction.

Installation	Walls and ceilings
Material	16-gauge cold-rolled steel door and frame
Hinge	No hinge
Locking mechanism	Screwdriver-operated cam latch in cold-rolled steel
Finish	High-quality white powder coat primer
Packaging	Individually wrapped, 1 door per box

STANDARD FEATURES

CR Colled-rolled steel door and frame

35 Screwdriver-operated cam latch

No hinge

TABLE OF STANDARD SIZES

Door size WXH inches (mm)	Nb. of locks	Shipping weight	
		LBS	KG
RMD 08X08 (203x203)	2	3.5	1.6
RMD 12X12 (305x305)	2	5.9	2.7
RMD 16X16 (406x406)	2	8.7	3.9
RMD 24X24 (609x609)	4	16.7	7.6

Rough opening = Door size + 1/4" or + 6 mm

OTHER SIZES AND OPTIONS MADE IN 5 DAYS

POPULAR OPTIONS CUSTOMIZE YOUR OWN ACCESS DOOR

See CTR options on page 10

SFM

Flush Universal Surface Mounted Access Door with Exposed Flange



SPECIFICATIONS

The access panel sits directly on the wall and can be installed easily with fasteners on the corners.

Installation	Walls and ceilings
Material	16-gauge cold-rolled steel door and frame
Hinge	Continuous piano hinge, located on the second dimension (height)
Locking mechanism	Screwdriver-operated cam latch in cold-rolled steel
Finish	High-quality white powder coat primer
Packaging	Individually wrapped, 1 door per box

TABLE OF STANDARD SIZES

Door size WXH inches (mm)	Nb. of locks	Shipping weight	
		LBS	KG
SFM 08X08 (203x203)	1	3.8	1.7
SFM 12X12 (305x305)	1	6.5	2.9
SFM 16X16 (406x406)	1	9.7	4.4
SFM 18X18 (457x457)	1	11.7	5.3
SFM 24X24 (610x610)	2	18.5	8.4

Rough Opening = Door size + 1/4" or + 6 mm

OTHER SIZES AND OPTIONS MADE IN 5 DAYS

STANDARD FEATURES

CR Colled-rolled steel door and frame

35 Screwdriver-operated cam latch

110 Continuous piano hinge

POPULAR OPTIONS / CUSTOMIZE YOUR OWN ACCESS DOOR

Latch	10 Key-operated cylinder cam latch	50 Hex head cam latch	90 Pinned hex head cam latch
Handle	20 4" handle-operated cam latch	21 Fixed 4" handle	25 4" handle key operated cam latch
Material	SS Stainless steel	GS Galvanneal steel	26* L handle
Other	140 Louvered door	160 Holding cable	

*Available only in combination with option 20, 22 or 25.

AHA

Recessed Access Door without Flange



AHA-GYP and AHA-PLY
Also available

SPECIFICATIONS

Designed with a 5/8" recessed door, this panel accepts ceramic tiles, acoustic tiles or any other type of material to blend in with the surface finish. Also available in different recesses of up to 1 1/2" to accommodate multiple layers of drywall.

Installation	Walls and ceilings
Material	16-gauge cold-rolled steel door and frame
Hinge	Continuous piano hinge, located on the second dimension (height)
Locking mechanism	Hex head cam latch
Finish	High-quality white powder coat primer
Packaging	Individually wrapped, 1 door per box

TABLE OF STANDARD SIZES

Door size WXH inches (mm)	Nb. of locks	Shipping weight	
		LBS	KG
AHA 08X08 (203x203)	1	3.3	1.5
AHA 12X12 (304x304)	1	5.7	2.6
AHA 16X16 (406x406)	1	8.5	3.9
AHA 18X18 (457x457)	1	10.4	4.7
AHA 24X24 (609x609)	1	17.3	7.5

Rough opening = Door size + 1/4" or + 6 mm

OTHER SIZES AND OPTIONS MADE IN 5 DAYS

STANDARD FEATURES

CR Colled-rolled steel door and frame

50 Hex head cam latch

110 Continuous piano hinge
Recessed 5/8"

POPULAR OPTIONS / CUSTOMIZE YOUR OWN ACCESS DOOR

Latch	10* Key-operated cylinder cam latch	90 Pinned hex head cam latch
Handle	20 4" handle-operated cam latch (not installed)	21 Fixed 4" handle (not installed)
Material	SS Stainless steel	GS Galvanneal steel
Other	60 Gasket	160 Holding cable
		240 Masonry anchors

*Maximum recess 1 1/2" with 3" frame

SPECIFICATIONS

The fire-rated insulated access door can be installed on fire-rated walls and ceilings.

Installation	Walls and ceilings
Material	20-gauge galvanized steel door and 16-gauge cold-rolled steel frame For PFI-HS, PFI-GYP-HS and PFI-PLY, optional 16-gauge cold-rolled steel frame and 14-gauge galvanized steel door
Hinge	Continuous piano hinge, located on the second dimension (height)
Locking mechanism	Self-latching tool-key-operated slam latch and/or ring-operated slam latch, both included
Finish	High-quality white powder coat primer
Packaging	Individually wrapped, 1 door per box
Insulation	2" thick fire-rated mineral wool
Inside panel release	Mechanisms to allow panels to open from inside, standard on all doors over 12" x 12"

TABLE OF STANDARD SIZES

Door size WXH inches (mm)	Nb. of locks	Shipping weight	
		LBS	KG
PFI 08X08 (203x203)	1	6.7	3.0
PFI 10X10 (254x254)	1	8.7	4.0
PFI 12X12 (304x304)	1	11.0	5.0
PFI 14X14 (355x355)	1	13.4	6.1
PFI 16X16 (406x406)	1	15.6	7.1
PFI 18X18 (457x457)	1	18.8	8.5
PFI 22X22 (558x558)	1	25.4	11.5
PFI 22X30 (558x762)	1	31.9	14.5
PFI 22X36 (558x914)	2	38.2	17.3
PFI 24X24 (609x609)	1	28.7	13.0
PFI 24X36 (609x914)	2	40.6	18.4
		LBS	KG
PFI 24X48 (609x1219)*	2	50.2	22.8
PFI 30X30 (762x762)*	1	40.5	18.4
PFI 32X32 (812x812)*	2	40.5	18.4
PFI 36X36 (914x914)*	2	54.5	24.7
PFI 48X48 (1219x1219)*	2	84.6	38.4

Rough opening = Door size + 1/4" or + 6 mm
* Not available for horizontal installation

OTHER SIZES AND OPTIONS MADE IN 5 DAYS



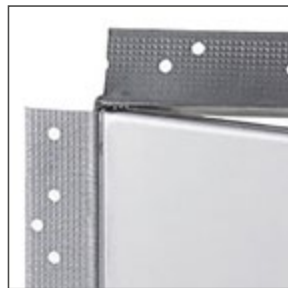
Fire-rated by
 Intertek



Ring-operated slam latch



Self-latching tool-key operated slam latch



PFI-GYP
Fire-Rated Insulated Access Door with Drywall Bead Flange



PFI-PLY
Fire-Rated Insulated Access Door with Plaster Bead Flange

PFI
Back view. Spring in wall installation.



STANDARD FEATURES

CR Cold-rolled steel frame	GS Galvanized steel door	80 Ring/tool key operated slam latch	110 Continuous piano hinge
--------------------------------------	------------------------------------	------------------------------------------------	--------------------------------------

POPULAR OPTIONS / CUSTOMIZE YOUR OWN ACCESS DOOR

See p.26 for detailed descriptions.

Latch	10 Key-operated cylinder cam latch	40 Mortise deadbolt lock	40C Mortise deadbolt lock with cylinder	40CKA Mortise deadbolt lock with cylinder, keyed alike	55 Hex head slam latch
	85 Mortise slam latch	85C Mortise slam latch with cylinder	85CKA Mortise slam latch cylinder keyed alike	99* Inside release thumbturn for mortise deadbolt lock	
Handle	21 Fixed 4" handle	22 4" Handle-operated slam latch	26** L handle		
Material	SS Stainless steel				
Other	60 Gasket	240 Masonry anchors			

* Available only in combination with option 40, 40C or 40CKA.
** Available only in combination with option 22.

FIRE RATING FOR VERTICAL USE:

CERTIFIED TO STANDARDS: UL 10B (2008) (R2020), NFPA 252 (2022), CAN/ULC S104 (2015) (R2020)

RATING ACHIEVED: 3 hours, neutral/negative pressure

MAXIMUM SIZE: 48" wide x 48" high (1,219 mm x 1,219 mm). Maximum area of 2,304 in². Tolerance on height and width limitation is ± 3" (76 mm) as long as the area does not exceed 2,304 in².

TEMPERATURE RISE: 250°F (121°C) after 30 min. 450°F (232°C) after 60 min.

FIRE RATING FOR HORIZONTAL USE:

CERTIFIED TO STANDARDS: ASTM E119 (2020), ASTM E119 (2024), CAN/ULC S101 (2014)

RATING ACHIEVED: 3 hours in non-combustible construction. 1 hour in combustible construction.

MAXIMUM SIZE: 24" X 36" (610 mm X 914 mm) (hinges and latches on the side of 36"). Tolerance on dimension limitations is ± 3" (76 mm) as long as the area does not exceed 864 in².

TEMPERATURE RISE: Within allowable per ASTM E119 and CAN/ULC S101

Authorities Having Jurisdiction (AHJ) should be consulted in all cases as to the particular requirements that apply to the installation and use of fire-rated access doors.

Other models available in 5 days



PFI-HS
Fire-Rated Insulated Access Door for High Security with Exposed Flange
For walls and ceilings



PFI-GYP
Fire-Rated Insulated Access Door with Drywall Bead Flange
For walls and ceilings



PFI-GYP-HS
Fire-Rated Insulated Access Door for high security with Drywall Bead Flange
For walls and ceilings



PFI-PLY
Fire-Rated Insulated Access Door with Plaster Bead Flange
For walls and ceilings



PFI-PLY-HS
Fire-Rated Insulated Access Door for high security with Plaster Bead Flange
For walls and ceilings

PFN

Fire-Rated Uninsulated Access Door with Exposed Flange



Fire-rated by
 Intertek

SPECIFICATIONS

The fire-rated uninsulated access door can be used on fire-rated walls.

Installation	Walls
Material	16-gauge cold-rolled steel
Hinge	Continuous piano hinge, located on the second dimension (height)
Locking mechanism	Self-latching tool-key operated slam latch and/or ring-operated slam latch, both included
Finish	High-quality white powder coat primer
Packaging	Individually wrapped, 1 door per box
Inside panel release	Mechanism allowing panels to open from inside, standard on all doors over 12" x 12"



PFN-GYP
Fire-Rated Uninsulated Access Door with Drywall Flange



PFN-PLY
Fire-Rated Uninsulated Access Door with Plaster Bead Flange



Ring-operated slam latch



Self-latching tool-key operated slam latch

Authorities Having Jurisdiction (AHJ) should be consulted in all cases as to the particular requirements that apply to the installation and use of fire-rated access doors.

TABLE OF STANDARD SIZES

Door size WXH inches (mm)	Nb. of locks	Shipping weight	
		LBS	KG
PFN 08X08 (203x203)	1	6.1	2.8
PFN 10X10 (254x254)	1	7.7	3.5
PFN 12X12 (304x304)	1	9.3	4.2
PFN 14X14 (355x355)	1	11.3	5.1
PFN 16X16 (406x406)	1	13.2	6.0
PFN 18X18 (457x457)	1	15.4	7.0
PFN 22X22 (558x558)	1	20.4	9.3
PFN 22X30 (558x762)	1	25.2	11.4
PFN 22X36 (558x914)	2	29.8	13.5
PFN 24X24 (609x609)	1	22.8	10.3
PFN 24X36 (609x914)	2	31.5	14.3
PFN 30X30 (762x762)	1	31.9	14.5
PFN 32X32 (812x812)	2	35.8	16.2
PFN 36X36 (914x914)	2	42.3	19.2

Rough opening = Door size + 1/4" or + 6 mm

OTHER SIZES AND OPTIONS MADE IN 5 DAYS

FIRE RATING FOR VERTICAL USE ONLY:

CERTIFIED TO STANDARDS: UL 10B (2008) (R2020), NFPA 252 (2022), CAN/ULC S104 (2015) (R2020).

RATING ACHIEVED: 3 hours, neutral/negative pressure

MAXIMUM SIZE: 48" wide x 48" high (1219 mm x 1219 mm). Maximum area of 2,304 in². Tolerance on height and width limitation is ± 3" (76 mm) as long as the area does not exceed 2,304 in².

TEMPERATURE RISE: No rating achieved.

STANDARD FEATURES

CR Cold-rolled steel door and frame	80 Ring/tool key operated slam latch	110 Continuous piano hinge
-----------------------------------------------	------------------------------------------------	--------------------------------------

POPULAR OPTIONS / CUSTOMIZE YOUR OWN ACCESS DOOR

See p.26 for detailed descriptions.

Latch	10	40	40C	40CKA	55
Key-operated cylinder cam latch	Mortise deadbolt lock	Mortise deadbolt lock with cylinder	Mortise deadbolt lock with cylinder, keyed alike	Hex head slam latch	
85	85C	85CKA	99*		
Mortise slam latch	Mortise slam latch with cylinder	Mortise slam latch cylinder keyed alike	Inside release thumbturn for mortise deadbolt lock		
Handle	21	22	26**		
Fixed 4" handle	4" handle-operated slam latch	L handle			
Material	GS Galvanneal steel door	SS Stainless steel			
Other	60 Gasket	240 Masonry anchors			

* Available only in combination with option 40, 40C or 40CKA.

** Available only in combination with option 20, 22 or 25.

PFU

Fire-Rated Insulated Upward Opening Access Door with Exposed Flange



Fire-rated by
 Intertek

SPECIFICATIONS

The fire-rated insulated upward-opening access door can be used on fire-rated ceilings.

Installation	Ceilings
Material	20-gauge galvanneal steel door; 16 gauge cold-rolled steel frame
Hinge	Continuous piano hinge, located on the second dimension (height)
Locking mechanism	Hex head slam latch outside and a self-latching ring-operated slam latch inside
Finish	High-quality white powder coat primer
Packaging	Individually wrapped, 1 door per box
Insulation	2" thick fire-rated mineral wool

TABLE OF STANDARD SIZES

Door size WXH inches (mm)	Nb. of locks	Shipping weight	
		LBS	KG
PFU 22X30 (558x762)	1	33.3	15.1
PFU 22X36 (558x914)	2	39.2	17.8
PFU 24X24 (609x609)	1	29.8	13.5

Rough opening = Door size + 1/4" or + 6 mm

OTHER SIZES AND OPTIONS MADE IN 5 DAYS

FIRE RATING FOR HORIZONTAL USE ONLY:

CERTIFIED TO STANDARDS: ASTM E119 (2020), ASTM E119 (2024), CAN/ULC S101 (2014).

RATING ACHIEVED: 3 hours in non-combustible construction. 1 hour in combustible construction.

MAXIMUM SIZE: 24" x 36" (610 mm x 914 mm) (hinges & latch on 36" sides). Tolerance on dimension limitations are ± 3" (76 mm) as long as the area does not exceed 864 in².

TEMPERATURE RISE: Not applicable.

Authorities Having Jurisdiction (AHJ) should be consulted in all cases as to the particular requirements that apply to the installation and use of fire-rated access doors.

STANDARD FEATURES

CR Cold-rolled steel frame	GS Galvanneal steel door	55 Hex head slam latch	110 Continuous piano hinge
--------------------------------------	------------------------------------	----------------------------------	--------------------------------------

POPULAR OPTIONS / CUSTOMIZE YOUR OWN ACCESS DOOR

See p.26 for detailed descriptions.

Material SS Stainless steel

Other models available in 5 days



PFN-HS
Fire-Rated Uninsulated Access Door with Exposed Flange For walls



PFN-PLY-HS
Fire-Rated Uninsulated Access Door with Plaster Bead Flange For walls



PFN-GYP-HS
Fire-Rated Uninsulated Access Door with Drywall Flange For walls

Valve Box with Hidden Flange
Valve Box with Plexiglass Window and Hidden Flange



BTA
Valve box

SPECIFICATIONS

This practical cabinet can be pre-drilled for water pipes, gas pipes and conduits. The bevelled panel is aesthetically pleasing and functional.

Installation	Walls and ceilings
Material	16-gauge cold-rolled steel
Hinge	Concealed, exclusive pantograph double arm hinge, located on the second dimension (height)
Locking mechanism	Screwdriver-operated cam latch in cold-rolled steel
Finish	High-quality white powder coat primer
Packaging	Individually wrapped, 1 door per box
Depth	4" or 6"
Window	1/8" plexiglass window for BTV model

TABLE OF STANDARD SIZES

Door size WXH inches (mm)	Nb. of locks	Shipping weight	
		LBS	KG
BTA			
BTA 8.25 X 8.25 X 4 (209x209)	1	6.6	3.0
BTA 12X12X4 (304x304)	1	11.1	5.0
BTA 16X16X4 (406x406)	1	16.7	7.6
BTV			
BTV 8.25X8.25X4 (209x209)	1	6.6	3.0
BTV 12X12X4 (304x304)	1	11.1	5.0
BTV 16X16X4 (406x406)	1	16.7	7.6

Rough opening = Door size + 1/2" or + 12.7 mm

**OTHER SIZES AND OPTIONS
MADE IN RECORD TIME**

STANDARD FEATURES

CR Colled-rolled steel door and frame	35 Screwdriver-operated cam latch	Concealed, exclusive pantograph double arm design hinge
----------------------------------------------	------------------------------------------	---------------------------------------------------------

POPULAR OPTIONS / CUSTOMIZE YOUR OWN ACCESS DOOR

See p.26 for detailed descriptions.

Latch	10 Key-operated cylinder cam latch	15 Mortise cam latch preparation	15C Mortise cam latch preparation with cylinder, keyed differently	15CKA Mortise cam latch preparation with cylinder, keyed alike	30 Slide latch
	40 Mortise deadbolt lock	40C Mortise deadbolt lock with cylinder	40CKA Mortise deadbolt lock with cylinder, keyed alike	50 Hex Head cam latch	55 Hex head slam latch
	80 Ring/tool key operated slam latch	85 Mortise slam latch	85C Mortise slam latch with cylinder	85CKA Mortise slam latch cylinder keyed alike	90 Pinned hex head cam latch
	99* Inside release thumbturn for mortise deadbolt lock				
Handle	20 4" handle-operated cam latch	21 Fixed 4" handle	22 4" handle-operated slam latch	25 4" handle key operated cam latch	26** L handle
Material	SS Stainless steel	GS Galvanneal steel			
Other	60 Gasket	110 Continuous piano hinge	140 Louvered door	160 Holding cable	180 Double-leaf (Surface mounted only)

240 Masonry anchors

* Available only in combination with option 40, 40C or 40CKA. ** Available only in combination with option 20, 22 or 25.

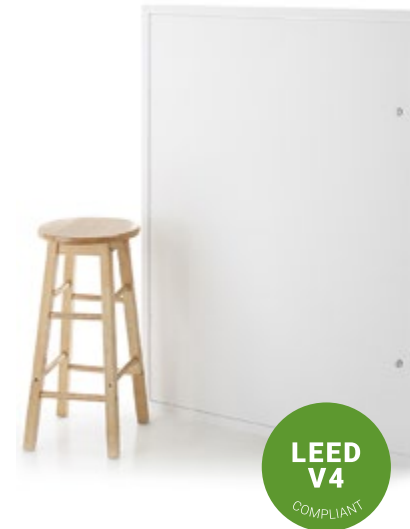
BTA-110-210, BTV-110-210
SURFACE-MOUNTED VALVE BOX WITH PIANO HINGE WITH OR WITHOUT PLEXIGLASS WINDOW

BTA-180-210, BTV-180-210
SURFACE-MOUNTED Double-leaf VALVE BOX WITH OR WITHOUT PLEXIGLASS WINDOW



BTV
Valve Box, with Plexiglass Window

HHD-110 | **Heavy Duty Access Door for Large Openings with Exposed Flange**



SPECIFICATIONS

The HVAC door is designed with a continuous piano hinge and a thicker frame, making it ideal for larger openings.

Installation	Walls and ceilings
Material	16-gauge cold-rolled steel door and frame
Hinge	Continuous piano hinge, located on the second dimension (height)
Locking mechanism	Screwdriver-operated cylinder cam latch
Finish	High-quality white powder coat primer
Packaging	Individually wrapped, 1 door per box

TABLE OF STANDARD SIZES

Door size WXH inches (mm)	Nb. of locks	Shipping weight	
		LBS	KG
HHD 48X48-110 (1219x1219)	2	62.9	28.5

Rough opening = Door size + 1/4" or + 6 mm

**OTHER SIZES AND
OPTIONS MADE IN 5 DAYS**



HHD-110-180
Heavy Duty Double-leaf Access Door for Large Openings with Exposed Flange

STANDARD FEATURES

CR Colled-rolled steel door and frame	220 Screwdriver-operated cylinder cam latch	110 Continuous piano hinge
----------------------------------------------	----------------------------------------------------	-----------------------------------

POPULAR OPTIONS / CUSTOMIZE YOUR OWN ACCESS DOOR

Please refer to p.26 for detailed descriptions.

Latch	10 Key-operated cylinder cam latch	40 Mortise deadbolt lock	40C Mortise deadbolt lock with cylinder	40CKA Mortise deadbolt lock with cylinder, keyed alike	55 Hex head slam latch
	80 Ring/tool key operated slam latch	85 Mortise slam latch	85C Mortise slam latch with cylinder	85CKA Mortise slam latch cylinder keyed alike	99* Inside release thumbturn for mortise deadbolt lock
Handle	20 4" handle-operated cam latch	21 Fixed 4" handle	22 4" handle-operated slam latch	25 4" handle key operated cam latch	26** L handle
Material	SS Stainless steel	GS Galvanneal steel			
Other	60 Gasket	160 Holding cable	180 Double Leaf	240 Masonry anchors	

* Available only in combination with option 40, 40C or 40CKA.
** Available only in combination with option 20, 22 or 25.



HHD-GYP
Heavy Duty Access Door for Large Openings with Drywall Bead Flange



HHD-PLY
Heavy Duty Access Door for Large Openings with Plaster Bead Flange

PAL

Flush Universal Aluminum Insulated Access Door with Exposed Flange



SPECIFICATIONS

The Aluminum access door, with neoprene gasket and fiberglass wool insulation, reduces sound and air transfer between partitions.

Installation	Walls and ceilings
Material	0.064" Aluminum
Hinge	Aluminum continuous piano-type hinge, located on the second dimension (height)
Locking mechanism	Key-operated cylinder cam latch with two keys per lock
Finish	High-quality white powder coat primer
Packaging	Individually wrapped, 1 door per box
Insulation	1" thick fiberglass wool
Gasketing	Neoprene around perimeter of door frame

TABLE OF STANDARD SIZES

Door size WXH inches (mm)	Nb. of locks	Shipping weight	
		LBS	KG
PAL 08X08 (203x203)	1	3.0	1.4
PAL 12X12 (304x304)	1	5.0	2.3
PAL 16X16 (406x406)	1	7.3	3.3
PAL 18X18 (457x457)	1	8.9	4.0
PAL 24X24 (609x609)	1	13.7	6.2
PAL 24X36 (609x914)	2	19.3	8.8
PAL 36X36 (914x914)	2	26.9	12.2

Rough opening = Door size + 1/4" or + 6 mm

OTHER SIZES AND OPTIONS MADE IN 5 DAYS

STANDARD FEATURES

AL Aluminum	10 Key-operated cylinder cam latch	60 Gasket	110 Continuous piano hinge
-----------------------	----------------------------------------------	---------------------	--------------------------------------

POPULAR OPTIONS / CUSTOMIZE YOUR OWN ACCESS DOOR

See p.26 for detailed descriptions.

Latch	40 Mortise deadbolt lock	40C Mortise deadbolt lock with cylinder	40CKA Mortise deadbolt lock with cylinder, keyed alike	55 Hex head slam latch	80 Ring/tool key operated slam latch
	85 Mortise slam latch	85C Mortise slam latch with cylinder	85CKA Mortise slam latch cylinder keyed alike	99* Inside release thumbturn for mortise deadbolt lock	220 Screwdriver-operated cylinder cam latch
Handle	20 4" handle-operated cam latch	21 Fixed 4" handle	22 4" handle-operated slam latch	25 4" handle key-operated cam latch	26** L handle
Material	SS Stainless steel	GS Galvanneal steel			

PAL-220
Flush Universal Aluminum Insulated Access Door with Exposed Flange and Screwdriver-Operated Cylinder Cam Latch



* Available only in combination with option 40, 40C or 40CKA.
** Available only in combination with option 20, 22 or 25.

DRD

Draft Stop Access Door for Attic Application with Exposed Flange



DRD-GYP and DRD-PLY
Also available

SPECIFICATIONS

Designed to provide easy access between attic sections while limiting air movement within the attic. The two-sided opening provides easy access, and the self-latching and self-closing mechanism ensures the door stays securely shut when not in use.

Installation	Walls and ceilings
Material	16-gauge cold-rolled steel
Hinge	Continuous piano hinge, located on the second dimension (height)
Locking mechanism	Self-latching tool-key-operated slam latch and ring operated slam latch, both included
Finish	High-quality white powder coat primer
Packaging	Individually wrapped, 1 door per box

TABLE OF STANDARD SIZES

Door size WXH inches (mm)	Nb. of locks	Shipping weight	
		LBS	KG
DRD 22X30 (558x762)	1	25.5	11.6
DRD 22X36 (558x914)	2	30.1	13.7
DRD 24X36 (609x914)	2	31.8	14.4

Rough opening = Door size + 1/4" or + 6 mm

OTHER SIZES AND OPTIONS MADE IN 5 DAYS



Self-latching tool-key operated slam latch



Ring-operated slam latch

STANDARD FEATURES

CR Colled-rolled steel door and frame	80 Ring/tool key operated slam latch	110 Continuous piano hinge
----------------------------------------------	---------------------------------------------	-----------------------------------

POPULAR OPTIONS / CUSTOMIZE YOUR OWN ACCESS DOOR

Latch	10 Key-operated cylinder cam latch	40 Mortise deadbolt lock	40C Mortise deadbolt lock with cylinder	40CKA Mortise deadbolt lock with cylinder, keyed alike	55 Hex head slam latch
	85 Mortise slam latch	85C Mortise slam latch with cylinder	85CKA Mortise slam latch cylinder keyed alike	99* Inside release thumbturn for mortise deadbolt lock	
Handle	21 Fixed 4" handle	22 4" handle-operated slam latch		26** L handle	
Material	SS Stainless steel	GS Galvanneal steel			
Other	60 Gasket	140 Louvered doors	180 Double-leaf doors	240 Masonry anchors	

* Available only in combination with option 40, 40C or 40CKA.
** Available only in combination with option 20, 22 or 25.

MDS

Medium-Security Flush Universal Access Door with Exposed Flange

SPECIFICATIONS

This access door is built to last with thicker steel and features a high-quality continuous piano hinge. The key-operated cylinder cam latch ensures medium-level security, making it a reliable choice when more security is required.

Installation	Walls and ceilings
Material	14-gauge galvaneal steel
Hinge	Continuous piano hinge, located on the second dimension (height)
Locking mechanism	Key-operated cylinder cam latch with 2 keys per lock
Finish	High-quality white powder coat primer
Packaging	Individually wrapped, 1 door per box

TABLE OF STANDARD SIZES

Door size WXH inches (mm)	Nb. of locks	Shipping weight	
		LBS	KG
MDS 12X12 (304x304)	1	6.8	3.1
MDS 16X16 (406x406)	1	10.3	4.7
MDS 18X18 (457x457)	1	12.5	5.7
MDS 24X24 (609x609)	1	19.9	9.0
MDS 24X30 (609x762)	2	24.9	11.3
MDS 24X36 (609x914)	2	28.1	12.8
MDS 36X36 (914x914)	2	39.8	18.1

Rough opening = Door size + 1/4" or + 6 mm

OTHER SIZES AND OPTIONS MADE IN 5 DAYS



LEED V4 COMPLIANT

STANDARD FEATURES

- GS Galvaneal steel
- 10 Key-operated cylinder cam latch
- 110 Continuous piano hinge

POPULAR OPTIONS / CUSTOMIZE YOUR OWN ACCESS DOOR

Please refer to p.26 for detailed descriptions.

Latch	15 Key-operated cylinder cam latch	15C Mortise cam latch preparation with cylinder, keyed differently	15CKA Mortise cam latch preparation with cylinder, keyed alike	35 Screwdriver-operated cam latch	40 Mortise deadbolt lock
	40C Mortise deadbolt lock with cylinder	40CKA Mortise deadbolt lock with cylinder, keyed alike	50 Hex head cam latch	55 Hex head slam latch	80 Hex head cam latch
	85 Mortise slam latch	85C Mortise slam latch with cylinder	85CKA Mortise slam latch cylinder keyed alike	90 Pinned hex head cam latch	99* Inside release thumbturn for mortise deadbolt lock
Handle	20 4" handle-operated cam latch	21 Fixed 4" handle	22 4" handle-operated slam latch	25 4" handle key-operated cam latch	26** L handle
Material	SS Stainless steel	CR Cold-rolled steel			
Other	60 Gasket	140 Louvered door	160 Holding cable	180 Double-leaf	240 Masonry anchors

* Available only in combination with option 40, 40C or 40CKA.

** Available only in combination with option 20, 22 or 25.

ALN-GYP

Anti-Ligature Door with Drywall Bead Flange

SPECIFICATIONS

This anti-ligature access panel is a valuable addition to high-security environments such as hospitals, prisons, and mental health facilities. Its hidden frame door, continuous piano hinge, and two key-operated cylinder cam latch work together to reduce self-harm risk and ensure safety.

Installation	Walls and ceilings
Material	16-gauge cold-rolled steel
Hinge	Continuous piano hinge, located on the second dimension (height)
Locking mechanism	Key-operated cylinder cam latch
Finish	High-quality white powder coat primer
Packaging	Individually wrapped, 1 door per box
Gasketing	Neoprene around perimeter of door frame

TABLE OF STANDARD SIZES

Door size WXH inches (mm)	Nb. of locks	Shipping weight	
		LBS	KG
ALN-GYP 12X12 (305x305)	2	5	2.3
ALN-GYP 16X16 (406x406)	2	8	3.6
ALN-GYP 18X18 (457x457)	2	10	4.5
ALN-GYP 24X24 (610x610)	2	15	6.8
ALN-GYP 24X36 (609x914)	3	22	10

Rough opening = Door size + 1/4" or + 6 mm

OTHER SIZES AND OPTIONS MADE IN 5 DAYS



LEED V4 COMPLIANT

STANDARD FEATURES

- CR Cold-rolled steel door and frame
- 10 Key-operated cylinder cam latch
- 60 Gasket

POPULAR OPTIONS / CUSTOMIZE YOUR OWN ACCESS DOOR

Latch	90 Pinned hex head cam latch
Material	SS Stainless steel GS Galvaneal steel

PHS

High-Security Flush Universal Access Door with Exposed Flange

SPECIFICATIONS

This access door has a heavy-duty butt hinge and a mortise deadbolt lock made of 10-gauge cold-rolled steel, for maximum security. It is compatible with top manufacturers such as Best, Corbin and Ilco mortise cylinders.

Installation	Walls and ceilings
Material	10-gauge cold-rolled steel for the door and hot-rolled stamped steel frame with a 2"x 2"x 1/16" angle
Hinge	3"x 3" heavy-duty butt hinge, 13-gauge cold-rolled steel, located on the second dimension (height)
Locking mechanism	Mortise deadbolt lock. Recommended for high-security applications.
Finish	High-quality white powder coat primer
Packaging	Individually wrapped, 1 door per box

TABLE OF STANDARD SIZES

Door size WXH inches (mm)	Nb. of locks	Shipping weight	
		LBS	KG
PHS 12X12 (304x304)	1	15.3	6.9
PHS 16X16 (406x406)	1	21.6	9.8
PHS 18X18 (457x457)	1	25.2	11.4
PHS 24X24 (609x609)	1	38.0	17.2
PHS 24X30 (609x762)	1	45.1	20.5
PHS 24X36 (609x914)	1	52.6	23.9
PHS 36X36 (914x914)	1	72.1	32.7

Rough opening = Door size + 1/4" or + 6 mm

OTHER SIZES AND OPTIONS MADE IN 5 DAYS



LEED V4 COMPLIANT

STANDARD FEATURES

- CR Colled-rolled steel door and frame
- 40 Mortise Deadbolt lock
- Heavy-duty butt hinge

POPULAR OPTIONS / CUSTOMIZE YOUR OWN ACCESS DOOR

Latch	40C Mortise deadbolt lock with cylinder	40CKA Mortise deadbolt lock with cylinder, keyed alike	45 Mortise preparation for detention deadbolt lock
	46 Detention deadbolt lock	99* Inside release thumbturn for mortise deadbolt lock	
Handle	21 Fixed 4" Handle	25 4" handle key operated cam latch	26** L handle
Other	240 Masonry anchors		

* Available only in combination with option 40, 40C or 40CKA.

** Available only in combination with option 20, 22 or 25.

PPA | Flush Aluminum Floor Hatch with Exposed Flange



SPECIFICATIONS

The Aluminum floor hatch provides reliable and secure access to vents, wires, plumbing and other fixtures located beneath floors or between floors of a building. It can support up to 300 pounds per square foot.

Installation	Floors
Material	¼" Aluminum diamond plate
Hinge	Heavy-duty Aluminum continuous piano hinge, 0.08". Hinges must be located on the second dimension (height)
Locking mechanism	Recessed handle-operated cam latch for floor hatches
Finish	No finish
Packaging	Individually wrapped, 1 Floor Hatch per box
Components	Aluminum stiffeners (only for doors over 24"x36")

CAUTION The PPA floor hatch is designed to support a live load of 300 lbs/sq.ft and includes a hold-open arm to keep the door in open position.

TABLE OF STANDARD SIZES

Door size WXH inches (mm)	Nb. of locks	Shipping weight	
		LBS	KG
PPA 24X24 (609x609)	1	36.0	16.3
PPA 24X36 (609x914)	1	47.2	21.4

Rough opening = Door size + 1/2" or + 13 mm

OTHER SIZES AND OPTIONS MADE IN 10 DAYS

STANDARD FEATURES

- AL Aluminum
- 110 Continuous piano hinge

POPULAR OPTIONS / CUSTOMIZE YOUR OWN ACCESS DOOR

Please refer to p.26 for detailed descriptions.

- Handle** **100K** **Key-operated recessed handle cam latch with cap for key path**
Exterior handle with key-operated cam latch that operates the locking mechanism. Only applicable for PPA model.



TRH | Roof Hatch



SPECIFICATIONS

The roof hatch, made of galvanized steel, is designed to provide easy access to building rooftops.

Installation	Roofs
Material	14-gauge galvanized steel
Hinge	Heavy-duty pintle hinge, located on the second dimension (height)
Locking mechanism	Interior and exterior handle activating a slam latch
Finish	High-quality white powder coat primer
Components	2 gas cylinders, retaining bar handle
Cover	14-gauge galvanized steel with 1" fiberglass insulation
Curb	14-gauge galvanized steel with 1" fiberboard insulation
Gasketing	«D» foam adhesive gasket provides a flush and tight fit

TABLE OF STANDARD SIZES

Door size WXH inches (mm)	Nb. of locks	Shipping weight	
		LBS	KG
TRH 36X30 (914x762)	1	178	81
TRH 36X36 (914x914)	1	188	85

Rough opening = Size of roof hatch

OTHER SIZES AND OPTIONS MADE IN 10 DAYS



STANDARD FEATURES

- GS Galvanized steel
- 21 Fixed 4" handle
- 22 4" handle-operated slam latch
- 60 Gasket

POPULAR OPTIONS / CUSTOMIZE YOUR OWN ACCESS DOOR

See p.26 for detailed descriptions.

- Material** AL Aluminum
- Other** **130** Telescopic cylinder
- 135** Security bar

OPTIONS

At Cendrex, your choices are endless!

Customize Cendrex's standard products by choosing the size, materials and other options that are right for you.

Find out which options are available for each product (page 2-25)

LOCKING MECHANISMS

Low-security



30 Slide latch
Allows for the door to open due to a simple sliding action.



50 Hex head cam latch
Requires a standard Allen key to open the access door. Key sold separately. AK-50 – Allen key.



80 Ring/tool key operated slam latch
Allows for the door to shut itself due to the attached spring.



35 Screwdriver-operated cam latch
Standard on multipurpose access doors. Available in cold-rolled steel, stainless steel and galvanized steel.



55 Hex head slam latch
Requires a standard Allen key to open the access door. Key sold separately. AK-55 – Allen key.



220 Screwdriver-operated cylinder cam latch
Made for low security applications.

Medium-security



10 Key-operated cylinder cam latch
Recommended for locks that require controlled access.



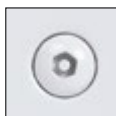
85 Mortise slam latch
Accepts cylinders 1 5/32" in diameter.



85C Mortise slam latch with cylinder, keyed differently
85CKA Mortise slam latch cylinder, keyed alike
Accepts keyed alike cylinders.



15 Mortise cam latch preparation
The panel will accept cylinders 1 5/32" in diameter from most lock manufacturers (Best, Ilco, Corbin, etc.).
15C Mortise cam latch preparation with cylinder, keyed differently
15CKA Mortise cam latch preparation with cylinder, keyed alike



90 Pinned hex head cam latch
Requires a special pin Allen key to open the access door. Key sold separately. AK-90 – Allen key for pinned hex head cam latch.

High-security



40 Mortise deadbolt lock
Recommended for high security applications. The panel will accept cylinders 1 5/32" in diameter from most lock manufacturers (Best, Ilco, Corbin, etc.).



40C Mortise deadbolt lock with cylinder, keyed differently
40CKA Mortise deadbolt lock with cylinder, keyed alike



45 Mortise preparation for detention deadbolt lock
Plate with threaded holes for onsite detention deadbolt installation.



46 Detention deadbolt lock
High security prison grade lock (Folger, Adams, etc.)



47 Detention deadbolt key
Paracentric keys for high security prison grade detention locks.



99 Inside release thumbturn for mortise deadbolt lock
The door can be opened from inside the panel. Only available for option 40, 40C and 40CKA.

Our dedicated customer service representatives are at your fingertips

MONTREAL: 514-493-1489
FREE: 1-800-479-1489
info@cendrex.com
cendrex.com

HANDLES

With Key



25 4" handle key operated cam latch
Key-operated exterior handle that operates the locking mechanism.



100K Key-operated recessed handle cam latch with K cap for key path
Exterior handle with key operated cam latch that operates the locking mechanism. Available for PPA model only. Exterior handle with key operated cam latch that operates the locking mechanism. Available for PPA model only.

Without Key



20 4" handle-operated cam latch
Exterior handle that operates the locking mechanism.



21 Fixed 4" handle
Fixed exterior pull handle. It can be paired with other locking mechanisms.



22 4" handle-operated slam latch
Exterior handle which operates the slam latch locking mechanism.



26 L handle
Allows the door to be opened from the inside of the panel. Available only in combination with options 20, 22 or 25.

MATERIALS

GS Galvanneal steel

SS Stainless steel

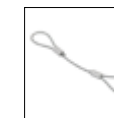
AL Aluminum

CR Cold-rolled steel

OTHER OPTIONS



60 Gasket
Provides weather resistance and reduces airflow between the panel and the frame.



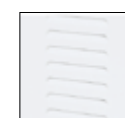
160 Holding cable
Once unlocked, these cables prevent the door panel from swinging open.



110 Continuous piano hinge
Standard on our fire-rated doors and usually recommended for use on larger doors. It provides specification compliance when required. Available in cold-rolled steel or stainless steel.



180 Double-leaf
Recommended for access to large openings.



140 Louvered door
Allows ventilation for special applications.



240 Masonry anchors
This option is available upon request. Please contact our customer service for more information.



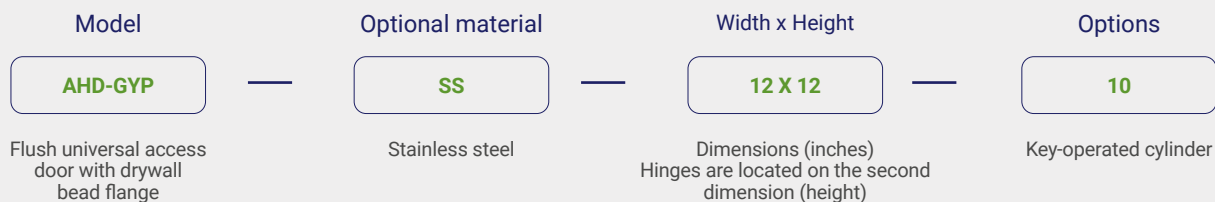
40 years of reliability

For over 40 years, Cendrex has specialized in crafting high-quality access doors, floor and roof hatches, and mailboxes of every size and specification you can imagine. Our relentless pursuit of reliability is driven by rigorous procedures, constant improvement, and a robust distribution network across North America that ensures fast, efficient delivery. Our dedicated team takes pride in making Cendrex the most trusted name in the industry of access panels and mailboxes.

How to order

Our highly qualified customer service representatives will design unique solutions for your projects and efficiently handle your requests. **Submit your order to: orders@cendrex.com**

PRODUCT CODE NUMBER EXAMPLE:



CEN02EN