

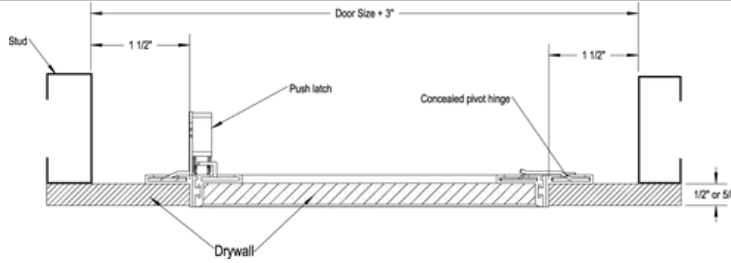
TECHNICAL DATA SHEET • SPECIFICATIONS

RECESSED ALUMINUM ACCESS DOOR WITH HIDDEN FLANGE Concealed push latches, concealed free-pivot hinge

RAL-00

INSTALLATION

Technical drawing RAL-00



STANDARD DIMENSIONS AND APPEARANCE

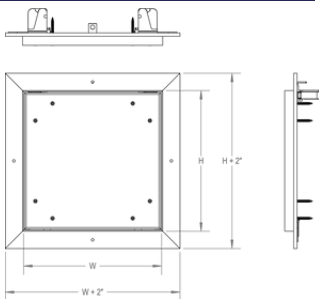
Dimensions • W X H		Recessed 1/2" Number of locks	Weight	
inches	mm		lbs	KG
8 x 8	203 x 203	2	2.3	1.0
12 x 12	304 x 304	2	3.5	1.6
16 x 16	406 x 406	2	4.9	2.2
18 x 18	457 x 457	2	5.8	2.6
20 x 20	508 x 508	2	6.7	3.0
24 x 24	609 x 609	2	8.8	4.0
36 x 36	914 x 914	2	16.9	7.7
24 x 48	609 x 1219	2	15.5	7.0

Your odd sizes: Made in 15 days

Dimensions • W X H		Recessed 5/8" Number of locks	Weight	
inches	mm		lbs	KG
8 x 8	203 x 203	2	2.8	1.3
12 x 12	304 x 304	2	4.4	2.0
16 x 16	406 x 406	2	6.5	3.0
18 x 18	457 x 457	2	7.8	3.5
20 x 20	508 x 508	2	9.1	4.1
24 x 24	609 x 609	2	12.2	5.5
36 x 36	914 x 914	2	24.2	11.0
24 x 48	609 x 1219	2	22.1	10.0

Your odd sizes: Made in 15 days

Rough wall opening is door size + 3/8" or + 9.5 mm



OTHER TECHNICAL INFORMATION
For wall installation, hinges must be located along the floor side (width).

PROJET DATA

Project:	Date:	QTY	W	H
Architech:				
Dealer:				
Contractor:				
Location:				

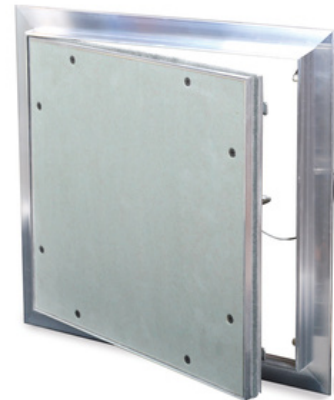
DESCRIPTION AND MATERIAL SPECIFICATION

Material	Mill Finish Aluminium extrusion with mold though drywall inlay
Hinge	Concealed free-pivot hinge, located on the first dimension (width)
Lock / Latch	Concealed push latch(es)
Finish	Mill Finish Aluminium extrusion with mold though drywall inlay
Packaging	Individually wrapped, 1 door per box
Removable door	Yes (with retaining cables)
Gasketing	Dust and moisture resistant gasket

POPULAR OPTIONS

For complete list of options go to cendrex.com

Lock / Latch	Key-operated cylinder cam latch (-10), screwdriver-operated cylinder cam latch (-220)
Other	Double-leaf (-180)



OPTIONS

This comprehensive list includes all available options. Please consult our catalog or contact our customer service to verify the feasibility of your chosen combination.

LOW SECURITY LOCKING MECHANISM



- 35** Screwdriver operated cam latch



- 220** Screwdriver operated cylinder Cam latch



- 80** Ring/tool key operated slam latch



- 55** Hex head slam latch and ring key operated slam latch



- 30** Slide latch



- 50** Allen hex head cam latch

HANDLES



- 25** WITH KEY - 4" handle and key operated cam latch



- 100K** Key-operated recessed handle cam latch with cap over key path



- 20** WITHOUT KEY - 4" handle operated cam latch



- 22** WITHOUT KEY - 4" handle operated slam latch



- 21** WITHOUT KEY Fixed 4" handle



- 26** WITHOUT KEY - L handle

MEDIUM SECURITY LOCKING MECHANISM



- 10** Key-operated cylinder cam latch



- 15** Mortise cam latch preparation
- 15C** Mortise cam latch preparation, keyed differently
- 15CKA** Mortise cam latch preparation, keyed alike



- 85** Mortise slam latch



- 85C** Mortise slam latch with cylinder
- 85CKA** Mortise slam latch cylinder keyed alike



- 90** Pinned hex head cam latch



- C** Cylinder cam latch, keyed differently



- CKA** Cylinder cam latch, keyed alike

MATERIALS



- GS** Galvanneal steel



- AL** Aluminum



- SS** Stainless steel



- CR** Cold rolled steel

HIGH SECURITY LOCKING MECHANISM



- 40** Mortise deadbolt lock



- 40C** Mortise Deadbolt Lock with Cylinder, keyed differently



- 40CKA** Mortise deadbolt lock with cylinder, keyed alike



- 99** Inside release thumbturn for mortise deadbolt lock



- 45** Mortise preparation for detention deadbolt lock



- 46** Detention deadbolt lock



- 47** CI Detention deadbolt Key

OTHERS



- 60** Gasket



- 160** Holding cable



- 240** Masonry anchors