

TECHNICAL DATA SHEET • SPECIFICATIONS

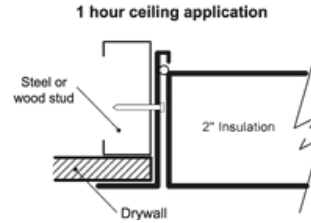
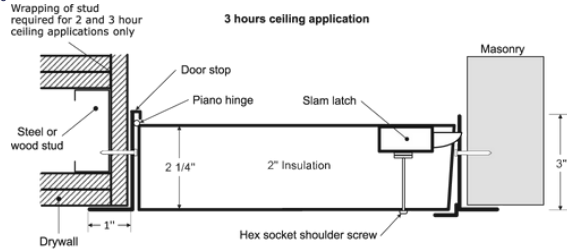
FIRE-RATED INSULATED UPWARD OPENING ACCESS DOOR

Exposed flange, self-latching ring-operated slam latch, piano hinge

PFU-00

INSTALLATION

Technical drawing PFU-00



Authorities Having Jurisdiction (AHJ) should be consulted in all cases as to the particular requirements that apply to the installation and use of fire-rated access doors.

STANDARD DIMENSIONS AND APPEARANCE

Dimensions • W X H		Number of locks	Weight	
inches	mm		lbs	KG
22 x 30	558 x 762	1	33.3	15.1
22 x 36	558 x 914	2	39.2	17.8
24 x 24	609 x 609	1	29.8	13.5

Your odd sizes: Made in 5 days

Rough wall opening is door size + 1/4" or + 6 mm

Clear opening with door opened = W - 3 1/2"

FOR HORIZONTAL USE ONLY:

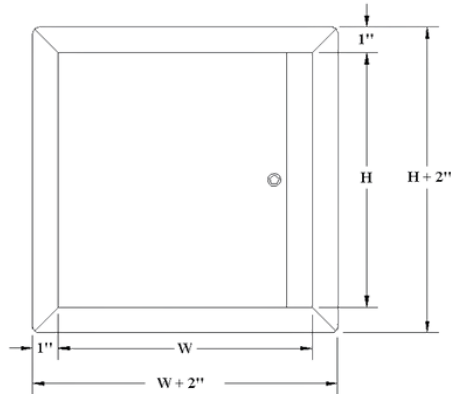
Certified to standards: ASTM E119 (2012), CAN/ULC S101 (2007).

Rating achieved: 3 hours in non-combustible construction. 1 hour in combustible construction.

Maximum size: 24" x 36" (610 mm x 914 mm) (hinges & latch on 36" sides).

Tolerance on dimension limitations are $\pm 3"$ (76 mm) as long as the area does not exceed 864 in².

Temperature rise: Not applicable.



PROJET DATA

Project:	Date:	QTY	W	H
Architech:				
Dealer:				
Contractor:				
Location:				

DESCRIPTION AND MATERIAL SPECIFICATION

Material	20-gauge galvalneal steel door, 16-gauge cold-rolled steel frame
Hinge	Continuous piano hinge, located in the second dimension (height)
Lock / Latch	Hex head slam latch outside and self-latching ring-operated slam latch inside
Finish	High quality white powder coat primer
Packaging	Individually wrapped, 1 door per box
Insulation	2" thick mineral wool

POPULAR OPTIONS

For complete list of options go to cendrex.com

Material	Stainless Steel (SS)
----------	----------------------



OPTIONS

This comprehensive list includes all available options. Please consult our catalog or contact our customer service to verify the feasibility of your chosen combination.

LOW SECURITY LOCKING MECHANISM



- ☐ **35**
Screwdriver operated
cam latch



- ☐ **220**
Screwdriver operated
cylinder Cam latch



- ☐ **80**
Ring/tool key operated slam
latch



- ☐ **55**
Hex head slam latch and ring key
operated slam latch



- ☐ **30**
Slide latch



- ☐ **50**
Allen hex head cam latch

HANDLES



- ☐ **25**
WITH KEY - 4" handle and key
operated cam latch



- ☐ **100K**
Key-operated recessed handle
cam latch with cap over key
path



- ☐ **20**
WITHOUT KEY - 4" handle
operated cam latch



- ☐ **22**
WITHOUT KEY - 4" handle
operated slam latch



- ☐ **21**
WITHOUT KEY
Fixed 4" handle



- ☐ **26**
WITHOUT KEY - L handle

MEDIUM SECURITY LOCKING MECHANISM



- ☐ **10**
Key-operated cylinder
cam latch



- ☐ **15**
Mortise cam latch preparation
15C
Mortise cam latch preparation,
keyed differently
15CKA
Mortise cam latch preparation,
keyed alike



- ☐ **85**
Mortise slam latch



- ☐ **85C**
Mortise slam latch with cylinder
85CKA
Mortise slam latch cylinder
keyed alike



- ☐ **90**
Pinned hex head cam latch



- ☐ **C**
Cylinder cam latch,
keyed differently



- ☐ **CKA**
Cylinder cam latch,
keyed alike

MATERIALS



- ☐ **GS**
Galvanneal steel



- ☐ **AL**
Aluminum



- ☐ **SS**
Stainless steel



- ☐ **CR**
Cold rolled steel

HIGH SECURITY LOCKING MECHANISM



- ☐ **40**
Mortise deadbolt lock



- ☐ **40C**
Mortise Deadbolt Lock with
Cylinder, keyed differently



- ☐ **40CKA**
Mortise deadbolt lock with
cylinder, keyed alike



- ☐ **99**
Inside release thumbturn for
mortise deadbolt lock



- ☐ **45**
Mortise preparation for
detention deadbolt lock



- ☐ **46**
Detention deadbolt lock



- ☐ **47**
CIDetention deadbolt Key

OTHERS



- ☐ **60**
Gasket



- ☐ **160**
Holding cable



- ☐ **240**
Masonry anchors