

TECHNICAL DATA SHEET • SPECIFICATIONS

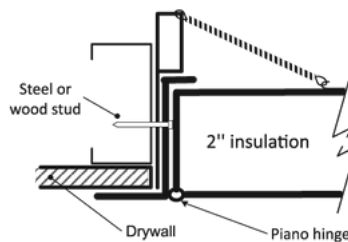
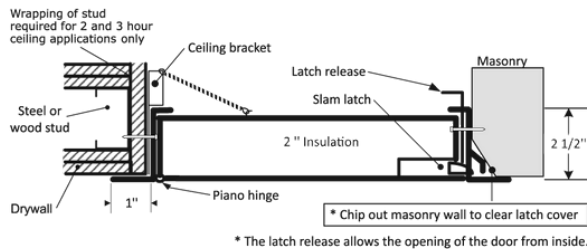
FIRE-RATED INSULATED ACCESS DOOR WITH EXPOSED FLANGE

Self-latching tool-key operated slam latch, piano hinge

PFI-00

INSTALLATION

Technical drawing PFI-00



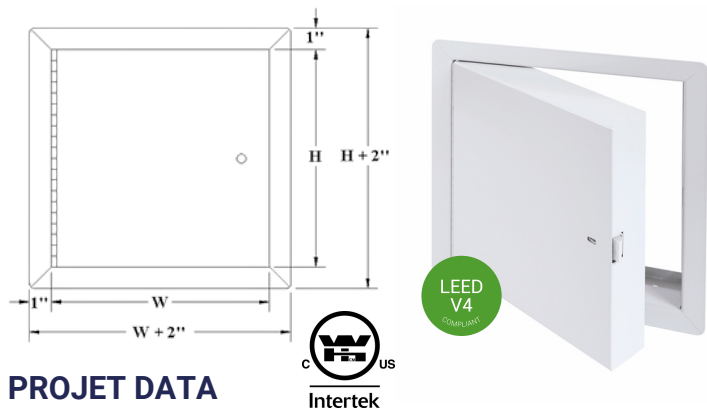
Authorities Having Jurisdiction (AHJ) should be consulted in all cases as to the particular requirements that apply to the installation and use of fire-rated access doors.

STANDARD DIMENSIONS AND APPEARANCE

Dimensions • W X H		Number of locks	Weight	
inches	mm		lbs	KG
8 x 8	203 x 203	1	6.7	3.0
10 x 10	254 x 254	1	8.7	4.0
12 x 12	304 x 304	1	11.0	5.0
14 x 14	355 x 355	1	13.4	6.1
16 x 16	406 x 406	1	15.6	7.1
18 x 18	457 x 457	1	18.8	8.5
22 x 22	558 x 558	1	25.4	11.5
22 x 30	558 x 762	1	31.9	14.5
22 x 36	558 x 914	2	38.2	17.3
24 x 24	609 x 609	1	28.7	13.0
24 x 36	609 x 914	2	40.6	18.4
*24 x 48	609 x 1219	2	50.2	22.8
*30 x 30	762 x 762	1	40.5	18.4
*32 x 32	812 x 812	2	40.5	18.4
*36 x 36	914 x 914	2	54.5	24.7
*48 x 48	1219 x 1219	2	84.6	38.4

Your odd sizes: Made in 5 days

Rough floor opening is door size + 1/4" or + 6 mm



PROJECT DATA



DESCRIPTION AND MATERIAL SPECIFICATION

Material	20-gauge galvalneal steel door and 16-gauge coldrolled steel frame
Hinge	Continuous piano hinge, located on the second dimension (height)
Lock / Latch	Self-latching tool-key-operated slam latch and/or ring-operated slam latch, both included
Finish	High-quality white powder coat primer
Packaging	Individually wrapped, 1 door per box
Insulation	2" thick fire-rated mineral wool
Inside panel release	Mechanisms to allow panels to open from inside, standard on all doors over 12" x 12"

POPULAR OPTIONS

For complete list of options go to cendrex.com

Lock / Latch	Key-operated cylinder cam latch (-10), mortise deadbolt lock (-40, cylinder optional), mortise slam latch (-85, cylinder optional)
Handle	Fixed 4" handle (-21), 4" handle-operated slam latch (-22)
Material	Stainless steel (SS)
Other	Neoprene gasket (-60), masonry anchors (-240)

For vertical use

Certified to standards: UL 10B (2009), NFPA 252 (2012), CAN/ULC S104 (2010)

Rating achieved: 3 hours, neutral/negative pressure

Maximum size: 48" wide x 48" high (1,219 mm x 1,219 mm). Maximum area of 2,304 in².

Tolerance on height and width limitation is ± 3" (76 mm) as long as the area does not exceed 2,304 in².

Temperature rise: 250°F (121°C) after 30 min. 450°F (232°C) after 60 min.

For horizontal use

Certified to standards: ASTM E119 (2012), CAN/ULC S101 (2007)

Rating achieved: 3 hours in non-combustible construction. 1 hour in combustible construction.

Maximum size: 24" X 36" (610 mm X 914 mm) (hinges and latches on the side of 36").

Tolerance on dimension limitations is ± 3" (76 mm) as long as the area does not exceed 864 in².

Temperature rise: Within allowable per ASTM E119 and CAN/ULC S101

Project:	Date:	QTY	W	H
Architect:				
Dealer:				
Contractor:				
Location:				

Tagging instructions:
Special instructions:
Options:
Submittal approval: (Signature or stamp)

OPTIONS

This comprehensive list includes all available options. Please consult our catalog or contact our customer service to verify the feasibility of your chosen combination.

LOW SECURITY LOCKING MECHANISM



- 35** Screwdriver operated cam latch



- 220** Screwdriver operated cylinder Cam latch



- 80** Ring/tool key operated slam latch



- 55** Hex head slam latch and ring key operated slam latch



- 30** Slide latch



- 50** Allen hex head cam latch

HANDLES



- 25** WITH KEY - 4" handle and key operated cam latch



- 100K** Key-operated recessed handle cam latch with cap over key path



- 20** WITHOUT KEY - 4" handle operated cam latch



- 22** WITHOUT KEY - 4" handle operated slam latch



- 21** WITHOUT KEY Fixed 4" handle



- 26** WITHOUT KEY - L handle

MEDIUM SECURITY LOCKING MECHANISM



- 10** Key-operated cylinder cam latch



- 15** Mortise cam latch preparation
- 15C** Mortise cam latch preparation, keyed differently
- 15CKA** Mortise cam latch preparation, keyed alike



- 85** Mortise slam latch



- 85C** Mortise slam latch with cylinder
- 85CKA** Mortise slam latch cylinder keyed alike



- 90** Pinned hex head cam latch



- C** Cylinder cam latch, keyed differently



- CKA** Cylinder cam latch, keyed alike

MATERIALS



- GS** Galvanneal steel



- AL** Aluminum



- SS** Stainless steel



- CR** Cold rolled steel

HIGH SECURITY LOCKING MECHANISM



- 40** Mortise deadbolt lock



- 40C** Mortise Deadbolt Lock with Cylinder, keyed differently



- 40CKA** Mortise deadbolt lock with cylinder, keyed alike



- 99** Inside release thumbturn for mortise deadbolt lock



- 45** Mortise preparation for detention deadbolt lock



- 46** Detention deadbolt lock



- 47** CI Detention deadbolt Key

OTHERS



- 60** Gasket



- 160** Holding cable



- 240** Masonry anchors