

TECHNICAL DATA SHEET • SPECIFICATIONS

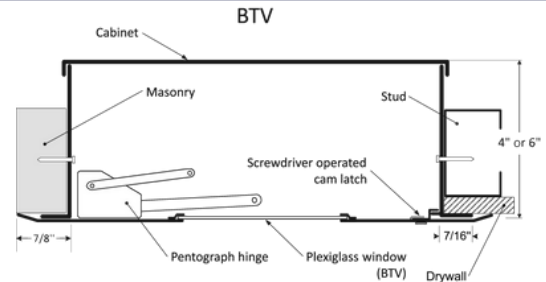
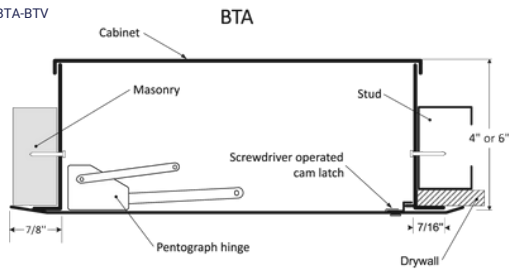
VALVE BOX WITH HIDDEN FLANGE

Screwdriver-operated cam latch, concealed double arm hinge

BTA-BTV

INSTALLATION

Technical drawing BTA-BTV



STANDARD DIMENSIONS AND APPEARANCE

Dimensions • W X H		Number of locks	Weight	
inches	mm		lbs	KG
8.25 x 8.25 x 4	209 x 209	1	6.6	3.0
12 x 12 x 4	304 x 304	1	11.1	5.0
16 x 16 x 4	406 x 406	1	16.7	7.6

Your odd sizes: Made in 5 days

Rough wall opening is door size + 1/2" or + 12.7 mm

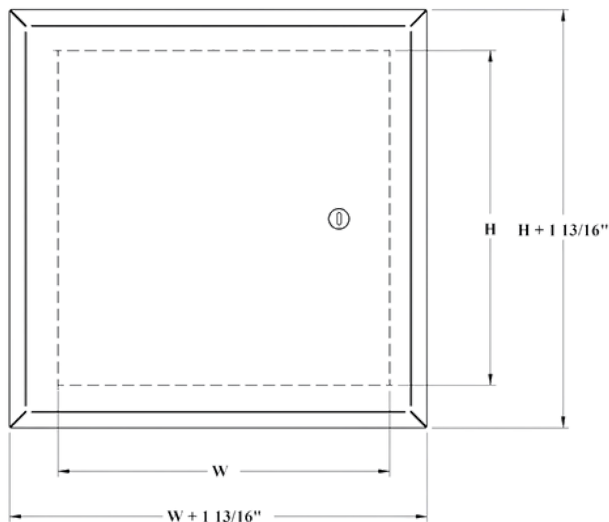
DESCRIPTION AND MATERIAL SPECIFICATION

Material	16-gauge cold-rolled steel
Hinge	Concealed, exclusive pantograph double arm hinge, located in the second dimension (height)
Lock / Latch	Screwdriver-operated cam latch in cold-rolled steel
Finish	High quality white powder coat primer
Packaging	Individually wrapped, 1 door per box
Depth	4" or 6"
Window	1/8" plexiglass window for BTV model

POPULAR OPTIONS

For complete list of options go to cendrex.com

Lock / Latch	Key-operated cylinder cam latch (-10), mortise cam latch preparation (-15, cylinder optional), hex head cam latch (-50)
Handle	Fixed 4" handle (-21), 4" handle-operated slam latch (-22)
Material	Stainless Steel (SS), Galvanneal steel (GS)
Other	Neoprene gasket (-60), surface box (-210)



LEED
V4
COMPLIANT

PROJET DATA

Project:	Date:	QTY	W	H
Architech:				
Dealer:				
Contractor:				
Location:				

Tagging instructions:

Special instructions:

Options:

Submittal approval:
(Signature or stamp)

OPTIONS

This comprehensive list includes all available options. Please consult our catalog or contact our customer service to verify the feasibility of your chosen combination.

LOW SECURITY LOCKING MECHANISM



- 35** Screwdriver operated cam latch



- 220** Screwdriver operated cylinder Cam latch



- 80** Ring/tool key operated slam latch



- 55** Hex head slam latch and ring key operated slam latch



- 30** Slide latch



- 50** Allen hex head cam latch

HANDLES



- 25** WITH KEY - 4" handle and key operated cam latch



- 100K** Key-operated recessed handle cam latch with cap over key path



- 20** WITHOUT KEY - 4" handle operated cam latch



- 22** WITHOUT KEY - 4" handle operated slam latch



- 21** WITHOUT KEY Fixed 4" handle



- 26** WITHOUT KEY - L handle

MEDIUM SECURITY LOCKING MECHANISM



- 10** Key-operated cylinder cam latch



- 15** Mortise cam latch preparation
- 15C** Mortise cam latch preparation, keyed differently
- 15CKA** Mortise cam latch preparation, keyed alike



- 85** Mortise slam latch



- 85C** Mortise slam latch with cylinder
- 85CKA** Mortise slam latch cylinder keyed alike



- 90** Pinned hex head cam latch



- C** Cylinder cam latch, keyed differently



- CKA** Cylinder cam latch, keyed alike

MATERIALS



- GS** Galvanneal steel



- AL** Aluminum



- SS** Stainless steel



- CR** Cold rolled steel

HIGH SECURITY LOCKING MECHANISM



- 40** Mortise deadbolt lock



- 40C** Mortise Deadbolt Lock with Cylinder, keyed differently



- 40CKA** Mortise deadbolt lock with cylinder, keyed alike



- 99** Inside release thumbturn for mortise deadbolt lock



- 45** Mortise preparation for detention deadbolt lock



- 46** Detention deadbolt lock



- 47** CI Detention deadbolt Key

OTHERS



- 60** Gasket



- 160** Holding cable



- 240** Masonry anchors