

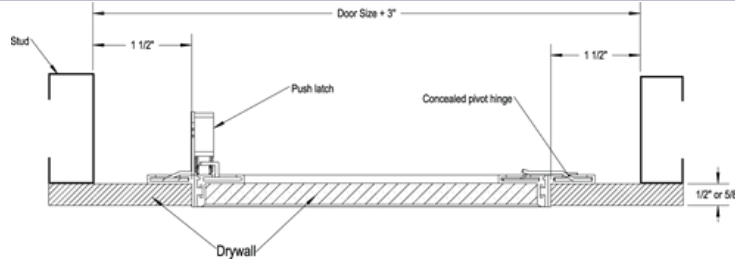
# TECHNICAL DATA SHEET • SPECIFICATIONS

## RECESSED ALUMINUM ACCESS DOOR WITH HIDDEN FLANGE Concealed push latches, concealed free-pivot hinge

RAL-00

### INSTALLATION

Technical drawing RAL-00



### STANDARD DIMENSIONS AND APPEARANCE

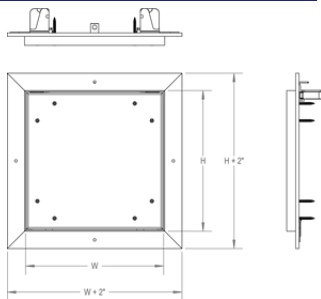
Dimensions • W X H		Recessed 1/2\"	Weight	
inches	mm	Number of locks	lbs	KG
8 x 8	203 x 203	2	2.3	1.0
12 x 12	304 x 304	2	3.5	1.6
16 x 16	406 x 406	2	4.9	2.2
18 x 18	457 x 457	2	5.8	2.6
20 x 20	508 x 508	2	6.7	3.0
24 x 24	609 x 609	2	8.8	4.0
36 x 36	914 x 914	2	16.9	7.7
24 x 48	609 x 1219	2	15.5	7.0
Your odd sizes: Made in 15 days				

Dimensions • W X H		Recessed 5/8\"	Weight	
inches	mm	Number of locks	lbs	KG
8 x 8	203 x 203	2	2.8	1.3
12 x 12	304 x 304	2	4.4	2.0
16 x 16	406 x 406	2	6.5	3.0
18 x 18	457 x 457	2	7.8	3.5
20 x 20	508 x 508	2	9.1	4.1
24 x 24	609 x 609	2	12.2	5.5
36 x 36	914 x 914	2	24.2	11.0
24 x 48	609 x 1219	2	22.1	10.0
Your odd sizes: Made in 15 days				

Rough wall opening is door size +  
3/8" or + 9.5 mm

#### OTHER TECHNICAL INFORMATION

For wall installation, hinges must be  
located along the floor side (width).



### PROJET DATA

Project:	Date:	QTY	W	H
Architech:				
Dealer:				
Contractor:				
Location:				

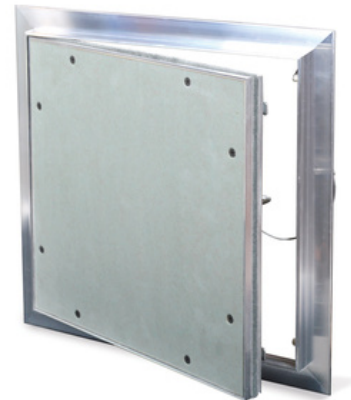
### DESCRIPTION AND MATERIAL SPECIFICATION

Material	Mill Finish Aluminium extrusion with moisture and mold resistant drywall inlay
Hinge	Concealed free-pivot hinge, located on the first dimension (width)
Lock / Latch	Concealed push latch(es)
Finish	Mill Finish Aluminium extrusion with moisture and mold resistant drywall inlay
Packaging	Individually wrapped, 1 door per box
Removable door	Yes (with retaining cables)
Gasketing	Dust and moisture resistant gasket

#### POPULAR OPTIONS

For complete list of options go to [cendrex.com](https://www.cendrex.com)

Lock / Latch	Key-operated cylinder cam latch (-10), screwdriver-operated cylinder cam latch (-220)
Other	Double-leaf (-180)



## OPTIONS

This comprehensive list includes all available options. Please consult our catalog or contact our customer service to verify the feasibility of your chosen combination.

### LOW SECURITY LOCKING MECHANISM



- ☐ **35**  
Screwdriver operated  
cam latch



- ☐ **220**  
Screwdriver operated  
cylinder Cam latch



- ☐ **80**  
Ring/tool key operated slam  
latch



- ☐ **55**  
Hex head slam latch and ring key  
operated slam latch



- ☐ **30**  
Slide latch



- ☐ **50**  
Allen hex head cam latch

### HANDLES



- ☐ **25**  
WITH KEY - 4" handle and key  
operated cam latch



- ☐ **100K**  
Key-operated recessed handle  
cam latch with cap over key  
path



- ☐ **20**  
WITHOUT KEY - 4" handle  
operated cam latch



- ☐ **22**  
WITHOUT KEY - 4" handle  
operated slam latch



- ☐ **21**  
WITHOUT KEY  
Fixed 4" handle



- ☐ **26**  
WITHOUT KEY - L handle

### MEDIUM SECURITY LOCKING MECHANISM



- ☐ **10**  
Key-operated cylinder  
cam latch



- ☐ **15**  
Mortise cam latch preparation  
**15C**  
Mortise cam latch preparation,  
keyed differently  
**15CKA**  
Mortise cam latch preparation,  
keyed alike



- ☐ **85**  
Mortise slam latch



- ☐ **85C**  
Mortise slam latch with cylinder  
**85CKA**  
Mortise slam latch cylinder  
keyed alike



- ☐ **90**  
Pinned hex head cam latch



- ☐ **C**  
Cylinder cam latch,  
keyed differently



- ☐ **CKA**  
Cylinder cam latch,  
keyed alike

### MATERIALS



- ☐ **GS**  
Galvanneal steel



- ☐ **AL**  
Aluminum



- ☐ **SS**  
Stainless steel



- ☐ **CR**  
Cold rolled steel

### HIGH SECURITY LOCKING MECHANISM



- ☐ **40**  
Mortise deadbolt lock



- ☐ **40C**  
Mortise Deadbolt Lock with  
Cylinder, keyed differently



- ☐ **40CKA**  
Mortise deadbolt lock with  
cylinder, keyed alike



- ☐ **99**  
Inside release thumbturn for  
mortise deadbolt lock



- ☐ **45**  
Mortise preparation for  
detention deadbolt lock



- ☐ **46**  
Detention deadbolt lock



- ☐ **47**  
CIDetention deadbolt Key

### OTHERS



- ☐ **60**  
Gasket



- ☐ **160**  
Holding cable



- ☐ **240**  
Masonry anchors