

TECHNICAL DATA SHEET • SPECIFICATIONS

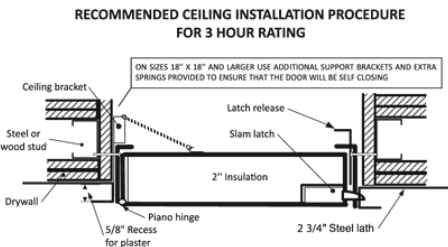
FIRE-RATED INSULATED ACCESS DOOR FOR HIGH SECURITY

Plaster bead flange, self-latching tool-key operated slam latch, piano hinge

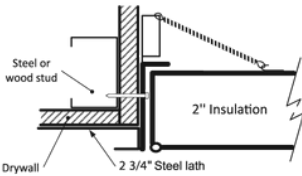
PFI-PLY

INSTALLATION

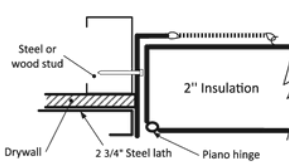
Technical drawing PFI-PLY



RECOMMENDED CEILING INSTALLATION PROCEDURE FOR 1 HOUR RATING



RECOMMENDED WALL INSTALLATION PROCEDURE FOR 1 HOUR RATING



Authorities Having Jurisdiction (AHJ) should be consulted in all cases as to the particular requirements that apply to the installation and use of fire-rated access doors.

STANDARD DIMENSIONS AND APPEARANCE

Dimensions • W X H		Number of locks	Weight	
inches	mm		lbs	KG
8 x 8	203 x 203	1	6.6	3.0
10 x 10	254 x 254	1	8.6	3.9
12 x 12	304 x 304	1	11.0	5.0
14 x 14	355 x 355	1	13.4	6.1
16 x 16	406 x 406	1	15.9	7.2
18 x 18	457 x 457	1	18.8	8.5
22 x 22	558 x 558	1	25.5	11.6
22 x 30	558 x 762	1	32.1	14.6
22 x 36	558 x 914	2	38.4	17.5
24 x 24	609 x 609	1	28.8	13.1
24 x 36	609 x 914	2	40.8	18.5
*24 x 48	609 x 1219	2	50.6	23.0
*30 x 30	762 x 762	1	40.6	18.4
*32 x 32	812 x 812	2	45.6	20.7
*36 x 36	914 x 914	2	54.6	24.7
*48 x 48	1219 x 1219	2	84.9	38.5

Your odd sizes: Made in 5 days

Rough wall opening is door size + 1/4" or + 6 mm

For installation in vertical wall assemblies:

Certified to standards: UL 10B (2008) (R2020), NFPA 252 (2022), CAN/ULC S104 (2015) (R2020).

Rating achieved: 3 hours, neutral/negative pressure.

Maximum size: 48" wide x 48" high (1219 mm x 1219 mm). Maximum area of 2304 in².

Tolerance on height and width limitation is ± 3" (76 mm) as long as the area does not exceed 2304 in².

Temperature rise: 250°F (121°C) after 30 min. 450°F (232°C) after 60 min.

For installation in horizontal ceiling assemblies:

Certified to standards: ASTM E119 (2020), ASTM E119 (2024), CAN/ULC S101 (2014).

Rating achieved: 3 hours in non-combustible construction. 1 hour in combustible construction.

Maximum size: 24" x 36" (hinges & latch on 36" long sides) (610 mm x 914 mm). tolerances on dimension limitations are ± 3" (76 mm) as long as the area does not exceed 864 in².

Temperature rise: not applicable.

PROJET DATA

Project:	Date:	QTY	W	H
Architech:				
Dealer:				
Contractor:				
Location:				

DESCRIPTION AND MATERIAL SPECIFICATION

Material	20-gauge galvalneal steel door and 16-gauge cold rolled steel frame
Hinge	Continuous piano hinge, located in the second dimension (height)
Lock / Latch	Self-latching tool-key operated slam latch and/or ring operated slam latch, both included
Finish	High quality white powder coat primer
Packaging	Individually wrapped, 1 door per box
Inside panel release	Mechanism allowing panels to open from inside, standard on all doors over 12" x 12"
Flange	22-gauge galvanized steel, 2 3/4" drywall bead flange
Frame	2 1/2" in depth, made of cold rolled steel
Insulation	2" thick fire rated mineral wool

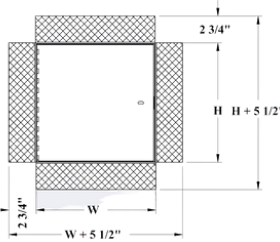
POPULAR OPTIONS

For complete list of options go to cendrex.com

Lock / Latch	Key-operated cylinder cam latch (-10), mortise slam latch (-85, cylinder optional)
Handle	4" handle-operated slam latch (-22)
Material	Stainless Steel (SS)

OTHER TECHNICAL INFORMATION

*Not available for ceiling rating (maximum 24" x 36")



OPTIONS

This comprehensive list includes all available options. Please consult our catalog or contact our customer service to verify the feasibility of your chosen combination.

LOW SECURITY LOCKING MECHANISM



- ☐ **35**
Screwdriver operated
cam latch



- ☐ **220**
Screwdriver operated
cylinder Cam latch



- ☐ **80**
Ring/tool key operated slam
latch



- ☐ **55**
Hex head slam latch and ring key
operated slam latch



- ☐ **30**
Slide latch



- ☐ **50**
Allen hex head cam latch

HANDLES



- ☐ **25**
WITH KEY - 4" handle and key
operated cam latch



- ☐ **100K**
Key-operated recessed handle
cam latch with cap over key
path



- ☐ **20**
WITHOUT KEY - 4" handle
operated cam latch



- ☐ **22**
WITHOUT KEY - 4" handle
operated slam latch



- ☐ **21**
WITHOUT KEY
Fixed 4" handle



- ☐ **26**
WITHOUT KEY - L handle

MEDIUM SECURITY LOCKING MECHANISM



- ☐ **10**
Key-operated cylinder
cam latch



- ☐ **15**
Mortise cam latch preparation
15C
Mortise cam latch preparation,
keyed differently
15CKA
Mortise cam latch preparation,
keyed alike



- ☐ **85**
Mortise slam latch



- ☐ **85C**
Mortise slam latch with cylinder
85CKA
Mortise slam latch cylinder
keyed alike



- ☐ **90**
Pinned hex head cam latch



- ☐ **C**
Cylinder cam latch,
keyed differently



- ☐ **CKA**
Cylinder cam latch,
keyed alike

MATERIALS



- ☐ **GS**
Galvanneal steel



- ☐ **AL**
Aluminum



- ☐ **SS**
Stainless steel



- ☐ **CR**
Cold rolled steel

HIGH SECURITY LOCKING MECHANISM



- ☐ **40**
Mortise deadbolt lock



- ☐ **40C**
Mortise Deadbolt Lock with
Cylinder, keyed differently



- ☐ **40CKA**
Mortise deadbolt lock with
cylinder, keyed alike



- ☐ **99**
Inside release thumbturn for
mortise deadbolt lock



- ☐ **45**
Mortise preparation for
detention deadbolt lock



- ☐ **46**
Detention deadbolt lock



- ☐ **47**
CIDetention deadbolt Key

OTHERS



- ☐ **60**
Gasket



- ☐ **160**
Holding cable



- ☐ **240**
Masonry anchors