

TECHNICAL DATA SHEET • SPECIFICATIONS

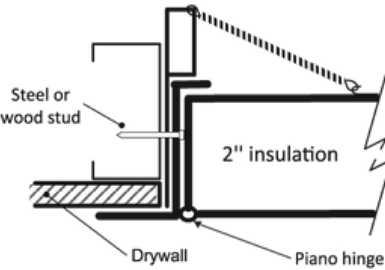
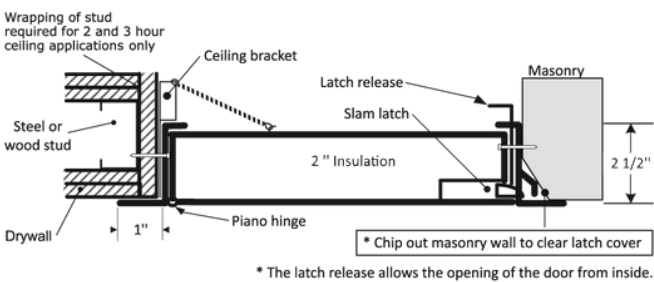
FIRE-RATED INSULATED ACCESS DOOR FOR HIGH SECURITY

Exposed flange, self-latching tool-key operated slam latch, piano hinge

PFI-HS

INSTALLATION

Technical drawing PFI-HS



Authorities Having Jurisdiction (AHJ) should be consulted in all cases as to the particular requirements that apply to the installation and use of fire-rated access doors.

STANDARD DIMENSIONS AND APPEARANCE

Dimensions • W X H		Number of locks	Weight	
inches	mm		lbs	KG
8 x 8	203 x 203	1	8.7	3.6
12 x 12	304 x 304	1	15.1	6.8
16 x 16	406 x 406	1	23.0	10.4
18 x 18	457 x 457	1	27.4	12.2
22 x 22	558 x 558	1	38.3	17.2
22 x 30	558 x 762	1	49.3	22.2
22 x 36	558 x 914	2	58.1	26.3
24 x 24	609 x 609	1	43.7	19.5
24 x 36	609 x 914	2	62.7	28.1
*24 x 48	609 x 1219	2	78.2	35.4
*30 x 30	762 x 762	1	62.1	28.1
*32 x 32	812 x 812	2	70.3	31.8
*36 x 36	914 x 914	2	85.6	38.6
*48 x 48	1219 x 1219	2	139.0	63.0

Your odd sizes: Made in 5 days

Rough wall opening is door size + 1/4" or + 6 mm

For installation in vertical wall assemblies:

Certified to standards: UL 10B (2008) (R2020), NFPA 252 (2022), CAN/ULC S104 (2015) (R2020).

Rating achieved: 3 hours, neutral/negative pressure.

Maximum size: 48" wide x 48" high (1219 mm x 1219 mm). Maximum area of 2304 in². Tolerance on height and width limitation is ± 3" (76 mm) as long as the area does not exceed 2304 in².

Temperature rise: 250°F (121°C) after 30 min. 450°F (232°C) after 60 min.

For installation in horizontal ceiling assemblies:

Certified to standards: ASTM E119 (2020), ASTM E119 (2024), CAN/ULC S101 (2014).

Rating achieved: 3 hours in non-combustible construction. 1 hour in combustible construction.

Maximum size: 24" x 36" (hinges & latch on 36" long sides) (610 mm x 914 mm).

tolerances on dimension limitations are ± 3" (76 mm) as long as the area does not exceed 864 in².

Temperature rise: not applicable.

DESCRIPTION AND MATERIAL SPECIFICATION

Material	14-gauge galvalume steel door and 16-gauge cold rolled steel frame
Hinge	Continuous piano hinge, located in the second dimension (height)
Lock / Latch	Self-latching tool-key operated slam latch and/or ring operated slam latch, both included
Finish	High quality white powder coat primer
Packaging	Individually wrapped, 1 door per box
Inside panel release	Mechanism allowing panels to open from inside, standard on all doors over 12" x 12"
Flange	1" exposed flange
Frame	2½" in depth, made of cold rolled steel
Insulation	2" thick fire rated mineral wool

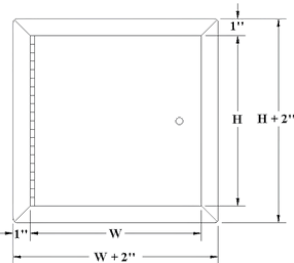
POPULAR OPTIONS

For complete list of options go to [cendrex.com](https://www.cendrex.com)

Lock / Latch	Key-operated cylinder cam latch (-10), mortise slam latch (-85, cylinder optional)
Handle	4" handle-operated slam latch (-22)

OTHER TECHNICAL INFORMATION

*Not available for ceiling rating (maximum 24" x 36" or 864 in²). Maximum for walls 48" x 48".



PROJET DATA

Project:	Date:	QTY	W	H
Architech:				
Dealer:				
Contractor:				
Location:				

Tagging instructions:
Special instructions:
Options:
Submittal approval: (Signature or stamp)

HEAD OFFICE
6500 Henri-Bourassa E. Blvd
Montreal QC H1G 5W9

cendrex
Made in Canada

Last updated: August 05, 2025
514-493-1489 | 1-800-479-1489
info@cendrex.com | [cendrex.com](https://www.cendrex.com)

OPTIONS

This comprehensive list includes all available options. Please consult our catalog or contact our customer service to verify the feasibility of your chosen combination.

LOW SECURITY LOCKING MECHANISM



- ☐ **35**
Screwdriver operated
cam latch



- ☐ **220**
Screwdriver operated
cylinder Cam latch



- ☐ **80**
Ring/tool key operated slam
latch



- ☐ **55**
Hex head slam latch and ring key
operated slam latch



- ☐ **30**
Slide latch



- ☐ **50**
Allen hex head cam latch

HANDLES



- ☐ **25**
WITH KEY - 4" handle and key
operated cam latch



- ☐ **100K**
Key-operated recessed handle
cam latch with cap over key
path



- ☐ **20**
WITHOUT KEY - 4" handle
operated cam latch



- ☐ **22**
WITHOUT KEY - 4" handle
operated slam latch



- ☐ **21**
WITHOUT KEY
Fixed 4" handle



- ☐ **26**
WITHOUT KEY - L handle

MEDIUM SECURITY LOCKING MECHANISM



- ☐ **10**
Key-operated cylinder
cam latch



- ☐ **15**
Mortise cam latch preparation
15C
Mortise cam latch preparation,
keyed differently
15CKA
Mortise cam latch preparation,
keyed alike



- ☐ **85**
Mortise slam latch



- ☐ **85C**
Mortise slam latch with cylinder
85CKA
Mortise slam latch cylinder
keyed alike



- ☐ **90**
Pinned hex head cam latch



- ☐ **C**
Cylinder cam latch,
keyed differently



- ☐ **CKA**
Cylinder cam latch,
keyed alike

MATERIALS



- ☐ **GS**
Galvanneal steel



- ☐ **AL**
Aluminum



- ☐ **SS**
Stainless steel



- ☐ **CR**
Cold rolled steel

HIGH SECURITY LOCKING MECHANISM



- ☐ **40**
Mortise deadbolt lock



- ☐ **40C**
Mortise Deadbolt Lock with
Cylinder, keyed differently



- ☐ **40CKA**
Mortise deadbolt lock with
cylinder, keyed alike



- ☐ **99**
Inside release thumbturn for
mortise deadbolt lock



- ☐ **45**
Mortise preparation for
detention deadbolt lock



- ☐ **46**
Detention deadbolt lock



- ☐ **47**
CIDetention deadbolt Key

OTHERS



- ☐ **60**
Gasket



- ☐ **160**
Holding cable



- ☐ **240**
Masonry anchors